




10/4 Fairway Close Manly Vale, NSW 2  1  1 

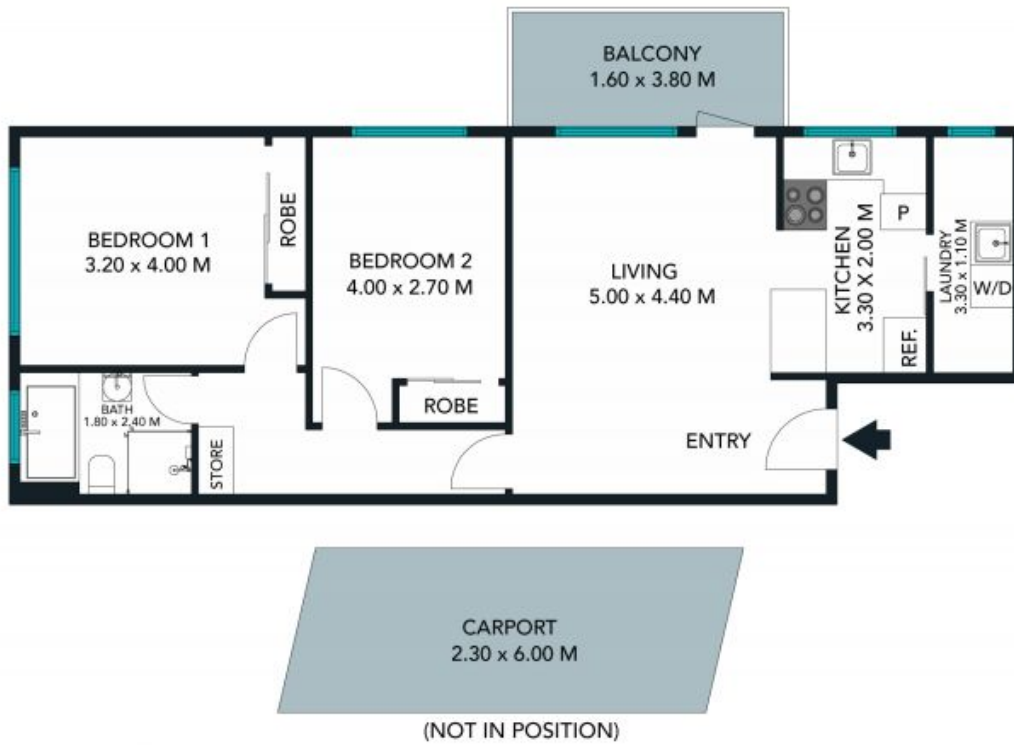
Peaceful lifestyle pad with prized north aspect

Holding a prime top floor position for an idyllic view across to Manly Golf Course is this modern apartment boasting wonderfully light-filled living from a prized due north aspect. Peacefully tucked away in a tree lined cul de sac, it's exceptionally placed to enjoy a carefree lifestyle close to buses, local amenities and Manly Beach.

Price: Deposit taken
Available Date: 20/11/2021



Todd Baker
0407 795 090



The floor plan is not to scale, measurements are indicative and in metres. Exterior elements are not in position. Plans should not be relied on. Interested parties should make and rely on their own enquiries.



10/4 Fairway Close, Manly Vale
 stonerealestate.com.au

Produced by DIAKRIT



The floor plan is not to scale; measurements are indicative and in metres. All features included in this 3D plan are for inspiration purposes only. This is not an exact replica of the property or the position of exterior elements. Plans should not be relied on. Interested parties should make and rely on their own enquiries.

10/4 Fairway Close, Manly Vale
stonerealestate.com.au

Produced by DIAKRIT