

11/37 Rudd Road Leumeah, NSW

2 1 1

Low maintenance living

Have you been searching for your first home or maybe a savvy investment that's located in the heart of LEUMEAH, only moments from train lines, shopping precincts, Cafes and the M5 motorway? Look no further, this is the one for you.

Price: \$498,000



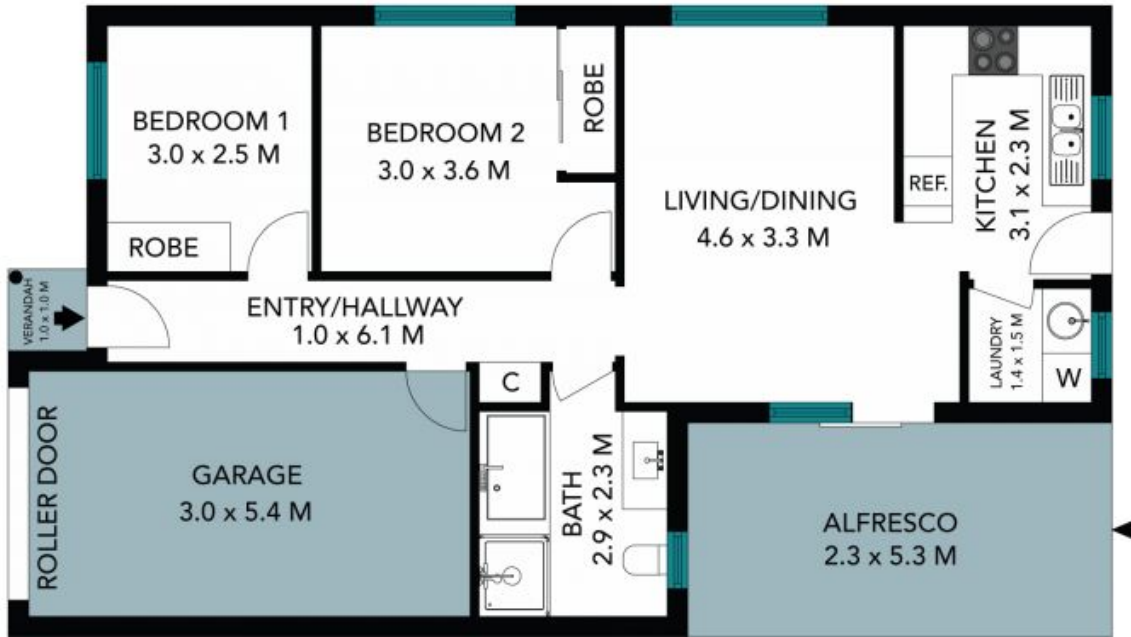
Ryan Clay

0439 185 740



Ryan Clay

0439 185 740



The floor plan is not to scale, measurements are indicative and in metres. Certain elements are not in position. Plans should not be relied on. Interested parties should make and rely on their own enquiries. All other information provided has been collected from reliable sources but cannot be guaranteed for accuracy.

11/37 Rudd Road
Leumeah



The floor plan is not to scale; measurements are indicative and in metres. All features included in this 3D plan are for inspiration purposes only. This is not an exact replica of the property or the position of exterior elements. Plans should not be relied on. Interested parties should make and rely on their own enquiries.