



28 Provincial Road Lindfield, NSW

6 

4 

3 

Modern residence with dual street access

Offering prestigious living across a 1,024sqm (approx.) level land parcel and boasting rear lane access with a separate granny flat, this palatial modern built entertainer presents outstanding versatility in a premier walk to rail location (800m approx.) Beautifully refreshed high-quality throughout, with multiple living and dining areas and expansive outdoor entertaining for large families.

Price:

Contact Agent



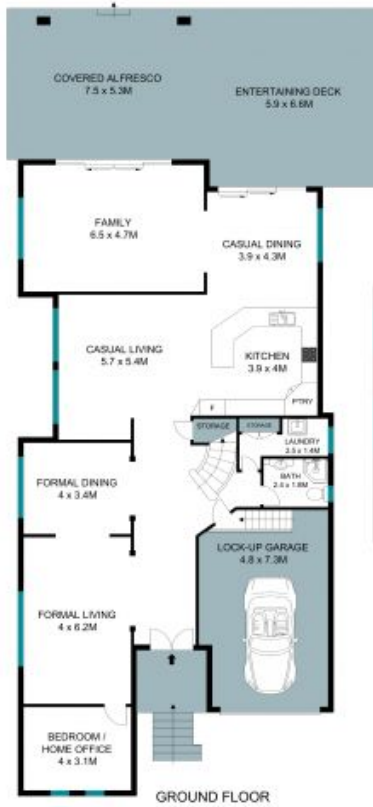
Steven Kourdis

0402 555 675



Ryan Woo

0410 884 680



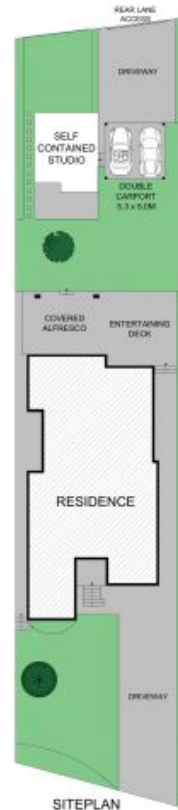
GROUND FLOOR



FIRST FLOOR



SELF-CONTAINED STUDIO



SITEPLAN

The site and floor plan are not to scale; measurements are indicative in meters. Plants and trees are placed for illustrative purposes. Plans should not be relied on. Interested parties should make and rely on their own inquiries. All other information provided has been collected from reliable sources but cannot be guaranteed for accuracy.

28 Provincial Road, Lindfield





GROUND FLOOR



FIRST FLOOR



SELF-CONTAINED
STUDIO



The site plan and floor plan are not to scale, measurements are indicative in meters. Bushes and trees are placed for illustration purposes. Plans should not be relied on. Interested parties should make and rely on their own inquiries. All other information provided has been collected from reliable sources but cannot be guaranteed for accuracy.

28 Provincial Road, Lindfield

