



39/36-40 Culworth Avenue Killara, NSW 1 1 1

### What a start

Retreat to the leafy splendour of this over-sized apartment that enjoys a perfect north-east aspect and 2nd floor elevation. Quiet and private, it offers an exceptional opportunity to gain a foothold in the prestige North Shore market or add a quality investment to the portfolio. Light filled interiors are immediately welcoming boasting a well laid-out design and quality finishes. The apartment comes with the desirable extra of secure parking on title and a prime setting that is steps to the rail, bus services, local caf? and Regimental Park and in the Killara High School catchment.

Price:

Contact Agent



**Bobby Shi**

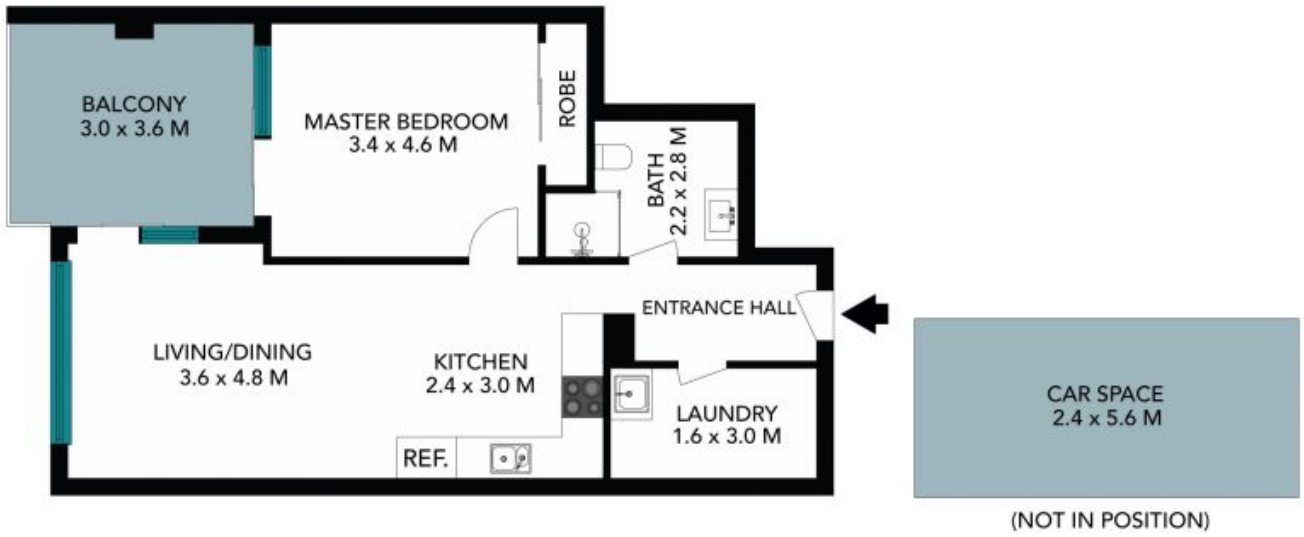
0404 823 911



**Andrew Braid**

0404 979 597

39/36-40 Culworth Avenue  
Skillaraburb



The floor plan is not to scale, measurements are indicative and in metres. Certain elements are not in position. Plans should not be relied on. Interested parties should make and rely on their own enquiries. All other information provided has been collected from reliable sources but cannot be guaranteed for accuracy.

39/36-40 Culworth Avenue  
Killara



The floor plan is not to scale; measurements are indicative and in metres. All features included in this 3D plan are for inspiration purposes only. This is not an exact replica of the property or the position of exterior elements. Plans should not be relied on. Interested parties should make and rely on their own enquiries.