



2/45 Whistler Street Manly, NSW

3 2 1

Ultra-chic town home one street from the beach

A rare and prized offering in an exclusive beachside location, this dual level town home provides the ultimate mix of low maintenance luxury and spectacular alfresco entertaining. Meticulously renovated from top-to-bottom with extensive light filled interiors and a giant tropical courtyard bathed in northerly sunlight, it is peacefully positioned within a two minute stroll of Manly Beach and Manly's cosmopolitan village hub.

Price: \$3,150,000



Eddy Piddington

0414 333 907

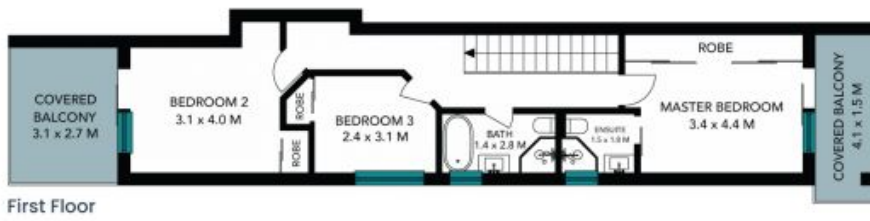
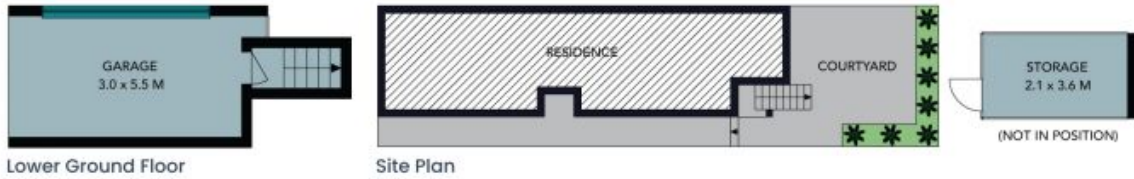


Michael Egan

0499 172 009

2/45 Whistler Street
Manly

STONE



The site plan and floor plan are not to scale; measurements are indicative and in metres. Bushes and trees are placed for illustration purposes. Plans should not be relied on. Interested parties should make and rely on their own enquiries. All other information provided has been collected from reliable sources but cannot be guaranteed for accuracy.

2/45 Whistler Street
Manly



Lower Ground Floor



Ground Floor



First Floor



The floor plan is not to scale; measurements are indicative and in metres. All features included in this 3D plan are for inspiration purposes only. This is not an exact replica of the property or the position of exterior elements. Plans should not be relied on. Interested parties should make and rely on their own enquiries.