



17402/177-219 Mitchell Road Erskineville, NSW



Resort Style Living

First home buyers, downsizers and investors alike will be vying to get their hands on this prized apartment. You will fall head over heels for this fantastic resort style complex with everything you could ever need including an outdoor pool, gym , tennis/basketball courts, heated indoor pool and onsite building management and security.

Price: \$665,000
Council Rates: \$245.00 p/q
Water Rates: \$157.00 p/q
Strata Rates: \$1,360.00 p/q



George Karafotias

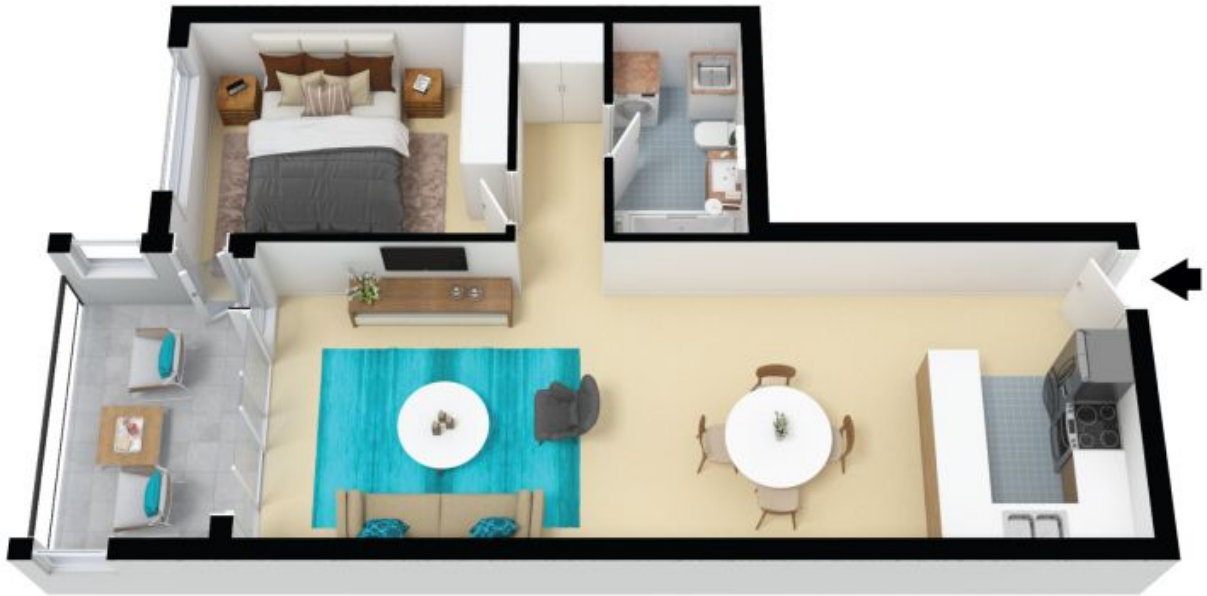
0405 436 336

17402/177-219 Mitchell Rd
Erskineville



The floor plan is not to scale, measurements are indicative and in metres. Colour elements are not in position. Plans should not be relied on. Interested parties should make and rely on their own enquiries. All other information provided has been collected from reliable sources but cannot be guaranteed for accuracy.

17402/177-219 Mitchell Rd
Erskineville



The floor plan is not to scale; measurements are indicative and in metres. All features included in this 3D plan are for inspiration purposes only. This is not an exact replica of the property or the position of exterior elements. Plans should not be relied on. Interested parties should make and rely on their own enquiries.