



8 Reid Street Seaforth, NSW

4

3

2

Endless potential and views for miles

First time offered in 40 years and perched on a generous 721sqm block, this spacious family home is perfectly oriented to make the most of its north-easterly aspect. Basking in expansive views that sweep over rooftops and across Manly Beach to St Pat's estate, this solid home offers great bones, a highly-versatile floorplan and plenty of opportunity to improve, extend and capitalise on its sterling location.

Price: \$3,800,000

Council Rates: \$728.10 p/q

Water Rates: \$150.99 p/q



Maria Cassarino

0411 818 093



Lauren Sudol

0438 138 675

8 Reid Street
Seaforth

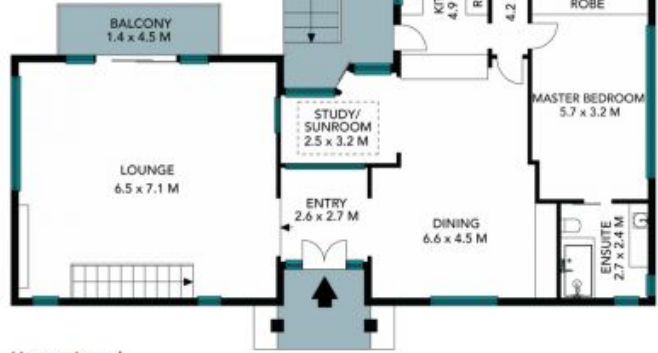


Lower Ground Level

Internal Living: 229 sqm
External Living: 34 sqm
Total Living Area: 263 sqm



Site Plan



Upper Level

STONE



The site plan and floor plan are not to scale; measurements are indicative and in metres. Bushes and trees are placed for illustration purposes. Plans should not be relied on. Interested parties should make and rely on their own enquiries. All other information provided has been collected from reliable sources but cannot be guaranteed for accuracy.

8 Reid Street
Seaforth

STONE



Lower Ground Level

Upper Level

Internal Living: 229 sqm
External Living: 34 sqm
Total Living Area: 263 sqm



The floor plan is not to scale; measurements are indicative and in metres. All features included in this 3D plan are for inspiration purposes only. This is not an exact replica of the property or the position of exterior elements. Plans should not be relied on. Interested parties should make and rely on their own enquiries.