

355 Lakedge Avenue Berkeley Vale, NSW 2 2 1

Lakefront Beauty!

Presenting a rare opportunity located in the heart of Berkeley Vale with a front row seat to our beautiful Tuggerah lakes water system, this single level brick and tile home that is in need of renovation is your ultimate blank canvas to create the lakeside lifestyle you have always dreamt of. Sitting on a 543m2 (approx..) block with uninterrupted views to The Entrance, R2 zoning and and a flat level parcel of land, making this the perfect canvas to either knock down and rebuild or extended off the current footprint. Private inspections are now available so please get in touch today to organise your walk through!

Price: \$920,000



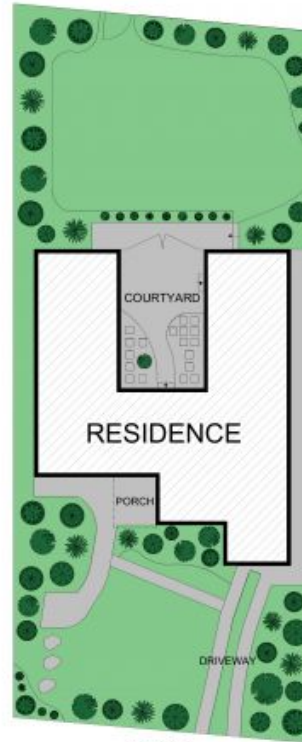
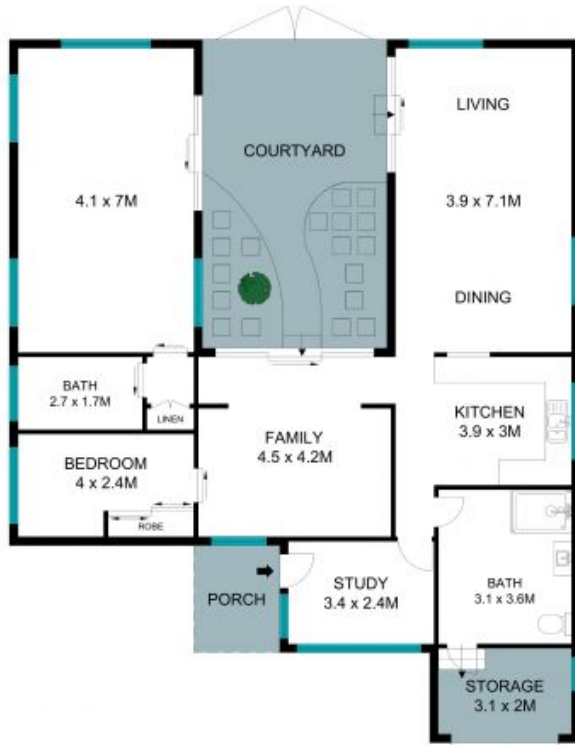
Volkan Akintetik

0499 830 247



Luke Villata

0468 645 844



The site plan and floor plan are not to scale; measurements are indicative in meters. Bushes and trees are placed for illustration purposes. Plans should not be relied on. Interested parties should make and rely on their own inquiries. All other information provided has been collected from reliable sources but cannot be guaranteed for accuracy.

355 Lakedge Avenue, Berkeley Vale

