



27 Brendon Avenue Farmborough Heights, NSW

4 

2 

2 

Superb family living among leafy surrounds

Showcasing an abundance of space, privacy and a wonderful north facing position, this family sanctuary offers an easy care lifestyle in an established family suburb with leafy surrounds. Boasting scenic escarpment views, an ideal open aspect and a flexible dual level layout, this inviting residence has everything you need. It is superbly positioned moments to parks, popular cafes and the Motorway.

Price: \$885,000



Sarah Ward

0400 439 602



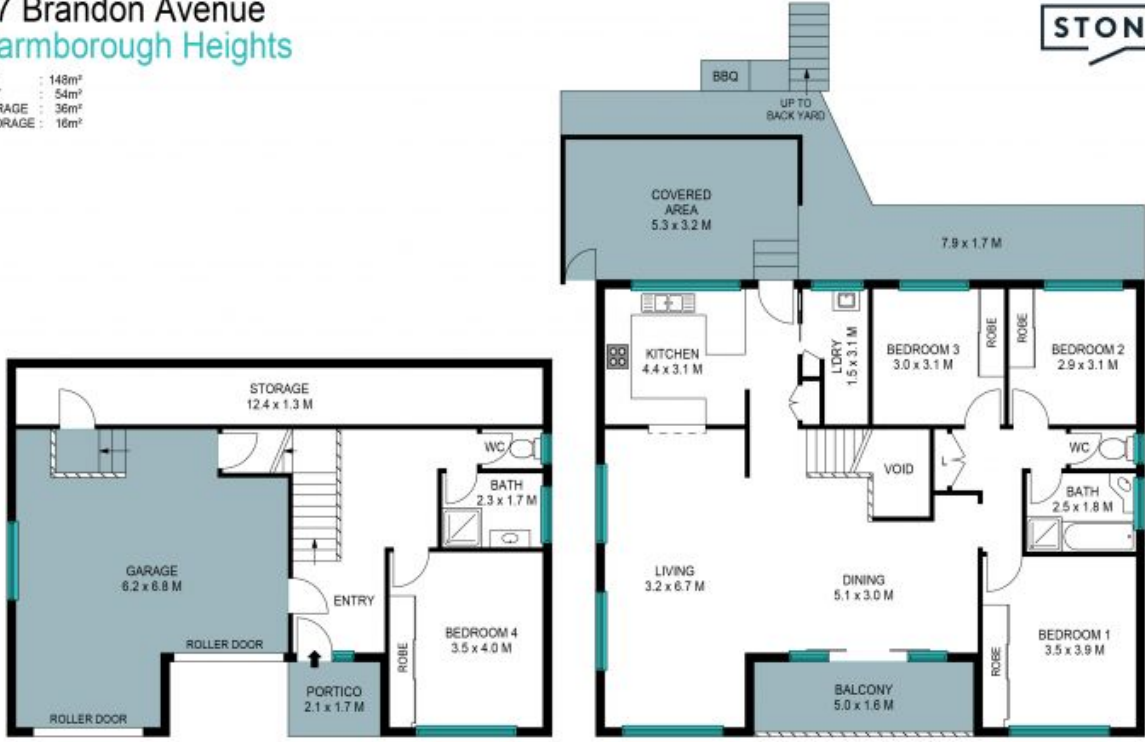
Benjamin Sayers

02 4228 1622

27 Brandon Avenue Farmborough Heights



INT : 148m²
 EXT : 54m²
 GARAGE : 36m²
 STORAGE : 16m²



GROUND LEVEL

UPPER LEVEL



The site plan and floor plan are not to scale; measurements are indicative and in metres. Fixtures and fittings are placed for illustration purposes. Plans should not be relied on. Interested parties should make and rely on their own enquiries. All other information provided has been collected from reliable sources but cannot be guaranteed for accuracy.