



7 Marmion Road Abbotsford, NSW



## Architectural Masterpiece

Occupying a commanding position with spectacular water views overlooking the Gladesville Bridge, this architecturally inspired and beautifully designed luxury home showcases exceptional style and quality finishes. Boasting multiple living zones with internal lift access to all three levels, this home offers space, functionality and a superb living environment of grand proportions. Positioned in a highly desirable location, only moments to waterfront walkways, parks, public transport, quality schools and vibrant Abbotsford Village.



**Christian Leung**

0423 555 162



**Daniel Fourtounis**

0415 154 812

7 Marmion Road  
Abbotsford



Ground Floor



Second Floor



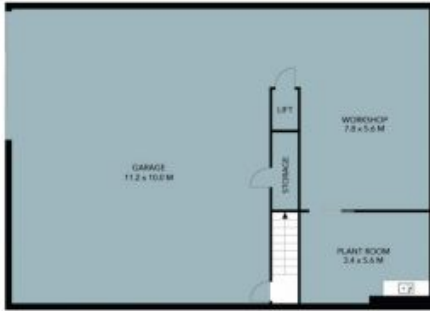
First Floor



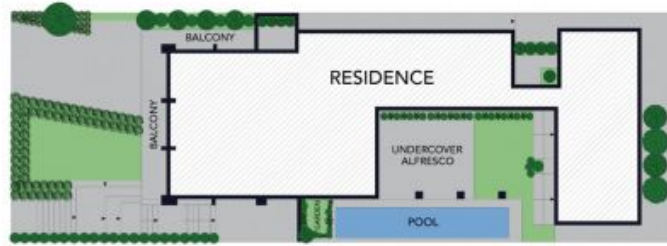
The floor plan is not to scale; measurements are indicative and in metres. All features included in this 3D plan are for inspiration purposes only. This is not an exact replica of the property or the position of exterior elements. Plans should not be relied on. Interested parties should make and rely on their own enquiries.

7 Marmion Road  
Abbotsford

STONE



Ground Floor



Site Plan



First Floor



Second Floor



The site plan and floor plan are not to scale; measurements are indicative and in metres. Bushes and trees are placed for illustration purposes. Plans should not be relied on. Interested parties should make and rely on their own enquiries. All other information provided has been collected from reliable sources but cannot be guaranteed for accuracy.