



2001/1 Mooltan Avenue Macquarie Park, NSW



Elite 20th floor views in Macquarie Park Village

A lifestyle like no other, located in the celebrated Macquarie Park Village complex, offering an array of cutting-edge amenities and shops on-site, plus leisure and transport a short walk away. Soaring 20th floor apartment, with spectacular views sweeping into the distance, enjoyed from an expansive balcony and spacious interiors presenting a total of 168sqm on title.

Price:

Contact Agent



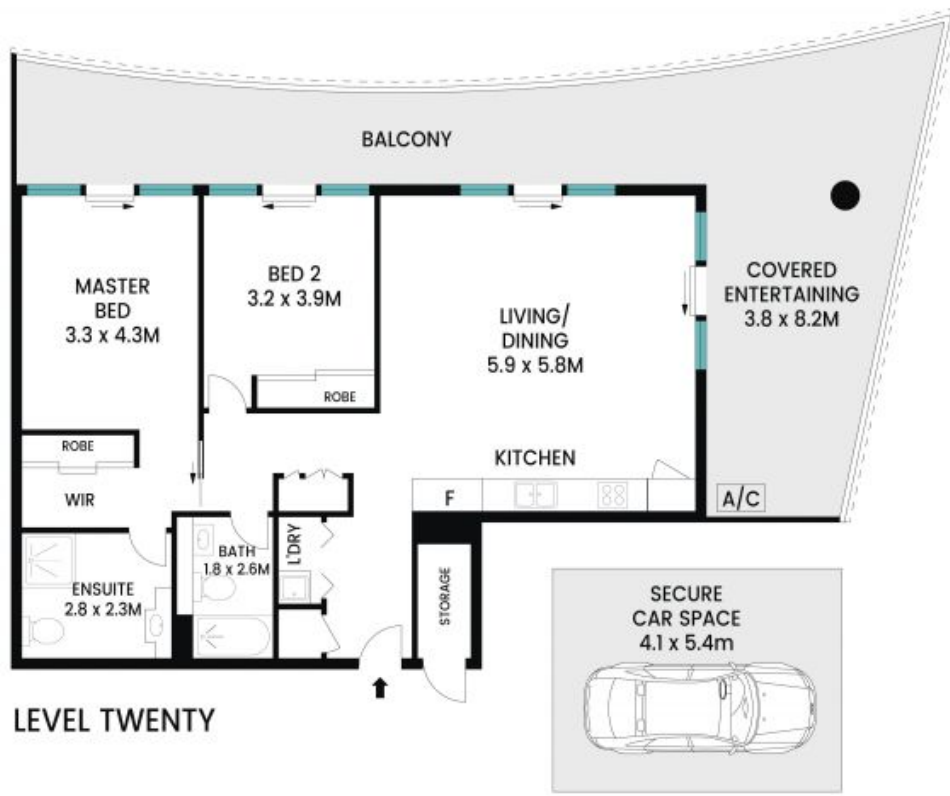
Ryan Woo

0410 884 680



Matt Payne

0435 825 242



The site plan and floor plan are not to scale; measurements are indicative in meters. Fixtures and trees are placed for illustration purposes. Plans should not be relied on. Interested parties should make and rely on their own inquiries. All other information provided has been collected from reliable sources but cannot be guaranteed for accuracy.

2001/1 Mooltan Avenue, Macquarie Park

