

10/1 Shepherd Street Chippendale, NSW



The perfect inner-city pad

Set right in the heart of one of Sydney's most vibrant inner-city pockets, this bright and spacious one-bedroom apartment offers the ultimate secure and low maintenance base for enjoying all the lifestyle advantages of central Sydney, with bars, restaurants and cafes on your doorstep and within easy walking distance of Broadway shopping centre, buses, UTS and Sydney Uni.

Price: \$620000
Council Rates: \$285.70 p/q
Water Rates: \$157.31 p/q
Strata Rates: \$1,714.36 p/q



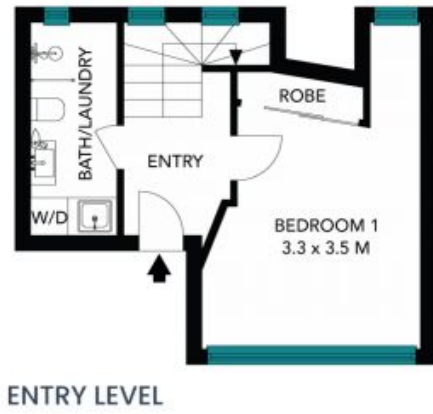
Julian Rowe

0412 544 448



Jordan Ashtari

0406 199 917



The site plan and floor plan are not to scale; measurements are indicative and in metres. Bushes and trees are placed for illustration purposes. Plans should not be relied on. Interested parties should make and rely on their own enquiries. All other information provided has been collected from reliable sources but cannot be guaranteed for accuracy.

10/1 Shepherd Street
Chippendale



The floor plan is not to scale, measurements are indicative and in metres. All features included in this 3D plan are for inspiration purposes only. This is not an exact replica of the property or the position of exterior elements. Plans should not be relied on. Interested parties should make and rely on their own enquiries.