



100 Musgrave Street Kirra, QLD

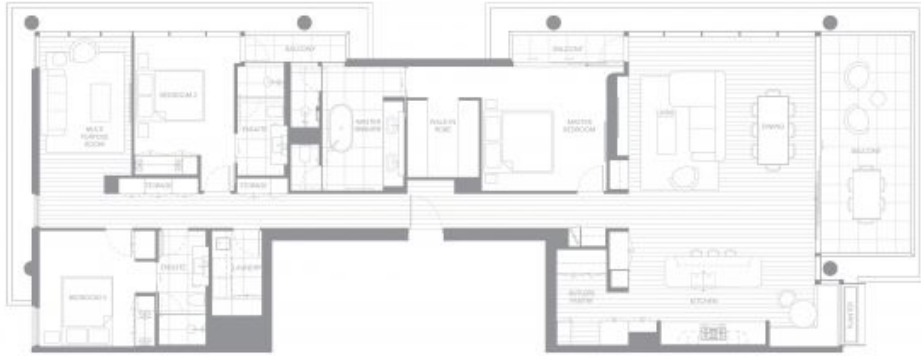
Emerson Kirra

Hirsch & Faigen continues its legacy of pioneering excellence on the Southern Gold Coast with Emerson, a truly boutique edition of luxurious residences at Kirra. Rothelowman, Brisbane's premier architecture studio, brings the project to life both inside and out, combining the understated elegance of a classic beachside aesthetic interpreted in a thoroughly modern way for contemporary Kirra living.

Located parkside at 100 Musgrave Street, looking over the canopy of Norfolk Pines towards an unspoilt Kirra Beach, Emerson features sophisticated amenities that enrich a social, active and productive lifestyle. Thoughtfully crafted living spaces are a study in flexibility ? accommodating a growing book, art or vinyl collection ? inviting residents to shape the place they call home.

3 Bedroom

INTERIOR
208sqm
EXTERIOR
29sqm
TOTAL
237sqm



PERCY PEASE
PARK

N
→



APARTMENT TYPE B2
501, 601, 701, 801, 901, 1001, 1101, 1201

0 1m 2m 3m

110 MUDGEVAY STREET, COOLANGUBA, QLD, 4215
This floorplan including furniture, fixture measurements and dimensions are approximate and for illustration purposes only.

3 Bedroom

INTERIOR
209sqm
EXTERIOR
29sqm
TOTAL
238sqm



PERCY PEASE
PARK

N
→



APARTMENT TYPE C2
502, 602, 702, 802, 902, 1002, 1102, 1202

0 1m 2m 3m

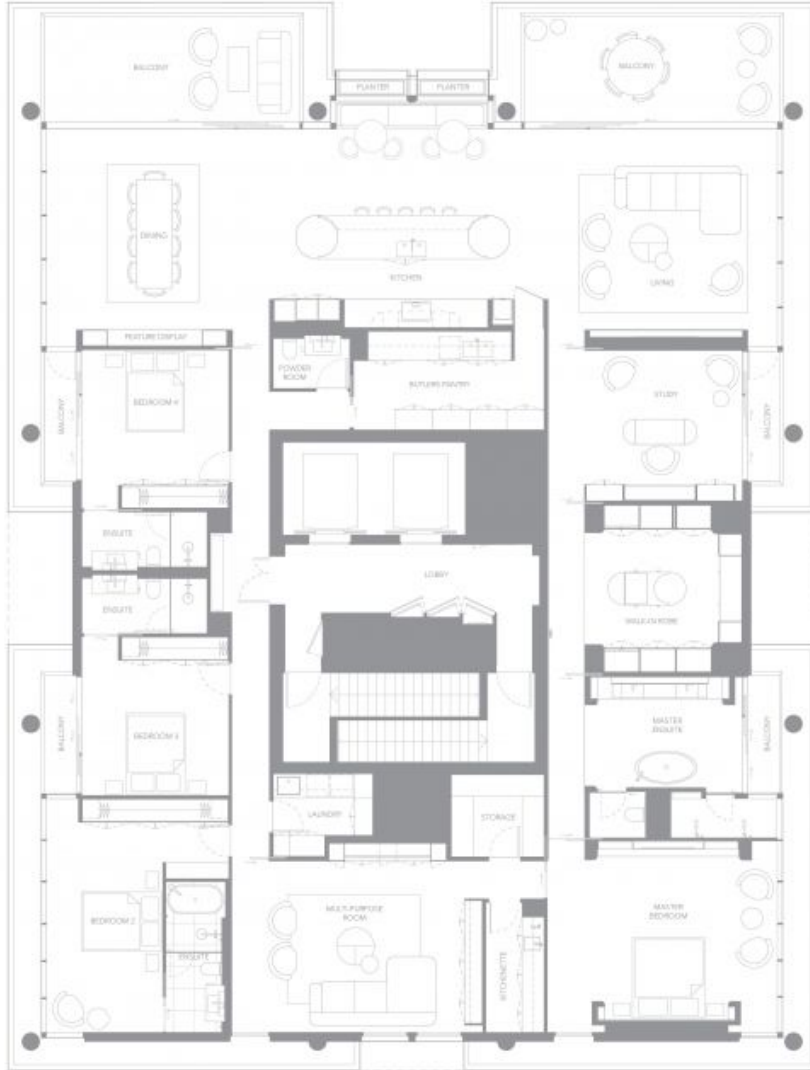
100 MUSGRAVE STREET, COOLANGATA, QLD, 4215
This floorplan including furniture, fixture measurements and dimensions are approximate and for illustration purposes only.

Penthouse
4 bedrooms

INTERIOR
437sqm
EXTERIOR
58sqm
TOTAL
495sqm



PERCY PEASE PARK



0 1m 2m 5m