

100 Musgrave Street Kirra, QLD

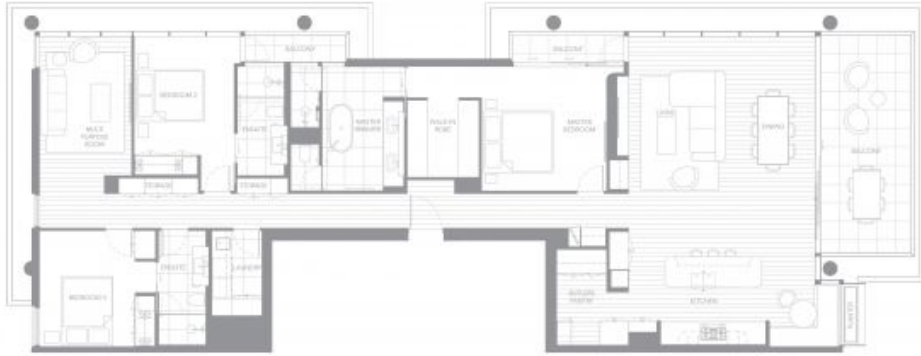
## Emerson Kirra

Hirsch & Faigen continues its legacy of pioneering excellence on the Southern Gold Coast with Emerson, a truly boutique edition of luxurious residences at Kirra. Rothelowman, Brisbane's premier architecture studio, brings the project to life both inside and out, combining the understated elegance of a classic beachside aesthetic interpreted in a thoroughly modern way for contemporary Kirra living.

Located parkside at 100 Musgrave Street, looking over the canopy of Norfolk Pines towards an unspoilt Kirra Beach, Emerson features sophisticated amenities that enrich a social, active and productive lifestyle. Thoughtfully crafted living spaces are a study in flexibility ? accommodating a growing book, art or vinyl collection ? inviting residents to shape the place they call home.

### 3 Bedroom

INTERIOR  
208sqm  
EXTERIOR  
29sqm  
TOTAL  
237sqm



PERCY PEASE  
PARK

N  
→



APARTMENT TYPE B2  
501, 601, 701, 801, 901, 1001, 1101, 1201

0 1m 2m 3m

110 MUDGEES STREET, COOLANGUBA, QLD, 4215  
This floorplan including furniture, fixture measurements and dimensions are approximate and for illustration purposes only.

### 3 Bedroom

INTERIOR  
209sqm  
EXTERIOR  
29sqm  
TOTAL  
238sqm



PERCY PEASE  
PARK

N  
→



APARTMENT TYPE C2  
502, 602, 702, 802, 902, 1002, 1102, 1202

0 1m 2m 3m

100 MURKINGS STREET, COOLANGUBA, QLD, 4215  
This floorplan including furniture, fixture measurements and dimensions are approximate and for illustration purposes only.

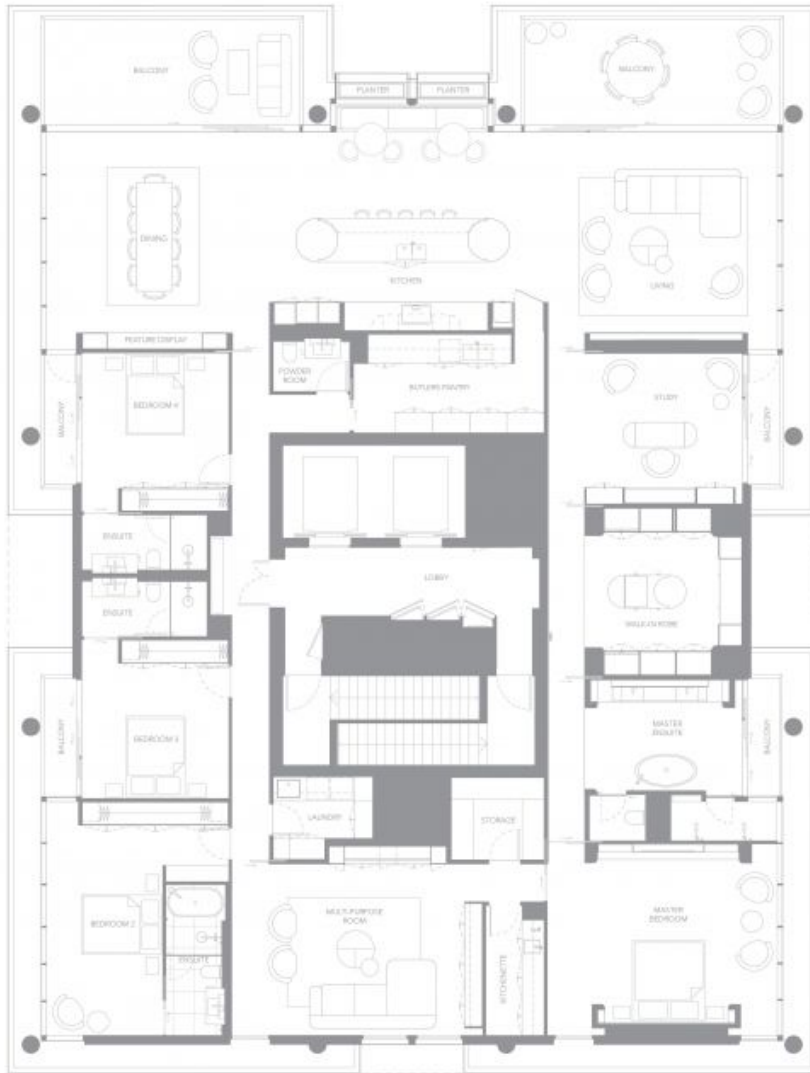


Penthouse  
4 bedrooms

INTERIOR  
437sqm  
EXTERIOR  
58sqm  
TOTAL  
495sqm



PERCY PEASE PARK



0 1m 2m 5m

100 MUSGRAVE STREET, COOLANGATTA, QLD, 4225  
The floorplan including furniture, floor measurements and dimensions are approximate and for illustrative purposes only.