

29 Addison Road Manly, NSW

6

4

1

The ultimate luxury harbourside retreat

Meticulously designed and built to a seldom-encountered level of detail and craftsmanship, this extraordinary Federation-era home has been transformed by award winning Corben Architects to emerge as a magnificent contemporary family haven spectacularly set against a north-to-rear background of sweeping harbour scapes, with a blue-ribbon address on exclusive Eastern Hill.

Price:

Contact Agent



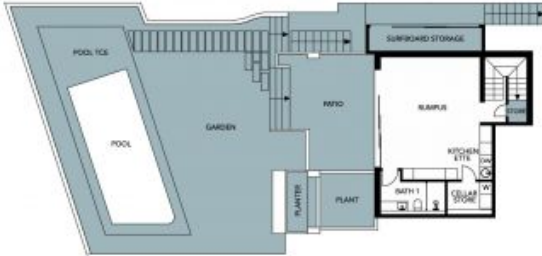
Tim Mumford

0421 942 693

29 Addison Road
Manly



Site Plan



The site plan and floor plan are not to scale; measurements are indicative and in metres. Bushes and trees are placed for illustration purposes. Plans should not be relied on. Interested parties should make and rely on their own enquiries. All other information provided has been collected from reliable sources but cannot be guaranteed for accuracy.