



Tilia
15-17 Forest G



208/15 Forest Grove Epping, NSW

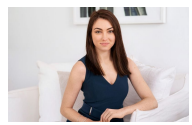
2 2 1

Walking Distance to Epping Train Station!

Nestled within the esteemed 'Tilia' development, this stunning two bedroom unit has been finished to perfection. With park views, plenty of natural light and an incredibly convenient address this boutique complex will be sure to impress.

- Combined lounge and dining room, glass sliding doors to covered balcony
- Designer kitchen, stone benches, mirrored splashback and breakfast bar
- Quality stainless steel appliances include Miele dishwasher and gas cooking
- Spacious and bright bedrooms, both complete with built-in, ensuite to master
- Sleek main bathroom tiled floor to ceiling, combined bath and shower
- Oversize balcony overlooks Forest Park and has a gas point for bbq facilities
- Ducted air conditioning, floorboards throughout, security building, intercom
- Internal laundry complete with dryer, single security space and storage cage

Price: Deposit Taken - \$575 per week
Bond: \$2,200
Available Date: 31/01/2022



Sarah Hastings
 02 8893 2218



Chloe Mawass
 0431 983 240