



11/20-24 Preston Avenue Engadine, NSW 2 1 1

### Parkview apartment in a highly central location

Claiming a prime top floor position overlooking Preston Park, this well presented apartment promises a blissful easycare lifestyle moments to all Engadine has to offer. A step inside reveals a superb low maintenance layout that doesn't compromise on space and is certain to captivate a range of buyers. The property is a walk to the station, schools, thriving village shops, cafes and restaurants.

**Price:** \$710,000  
**Council Rates:** \$353.00 p/q  
**Water Rates:** \$145.00 p/q  
**Strata Rates:** \$703.00 p/q



**Rhys Christofa**

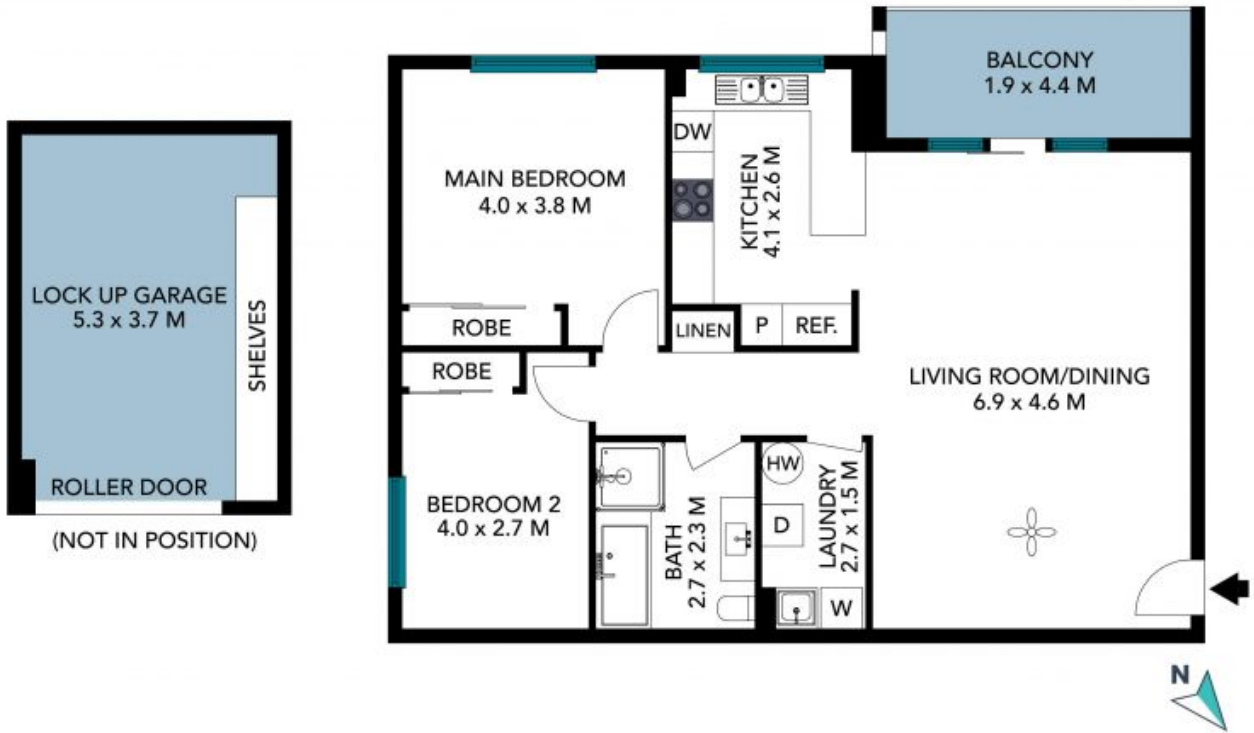
0415 684 877



**Lisa Hale**

0417 418 250

STONE



The floor plan is not to scale, measurements are indicative and in metres. Exterior elements are not in position. Plans should not be relied on. Interested parties should make and rely on their own enquiries. All other information provided has been collected from reliable sources but cannot be guaranteed for accuracy.

11/20-24 Preston Avenue  
Engadine

STONE



The floor plan is not to scale; measurements are indicative and in metres. All features included in this 3D plan are for inspiration purposes only. This is not an exact replica of the property or the position of exterior elements. Plans should not be relied on. Interested parties should make and rely on their own enquiries.