



40b Berne Street Bateau Bay, NSW

4 

2 

2 

### A Panorama From Every Window

Grand proportions, an inspired re-creation and a coastal aesthetic unite in this stunning residence to deliver what is undoubtedly one of Bateau Bay's finest homes. Occupying an incredible 1300sqm of land, this meticulously crafted home has been designed to capture every inch of the exquisite 180 view that showcases the ocean, lake and landscape surrounding. The interior is filled with natural light and offers an abundance of space for a large family. One truly unforgettable home.

**Price:** \$1,650,000



**Shanti Santhou**

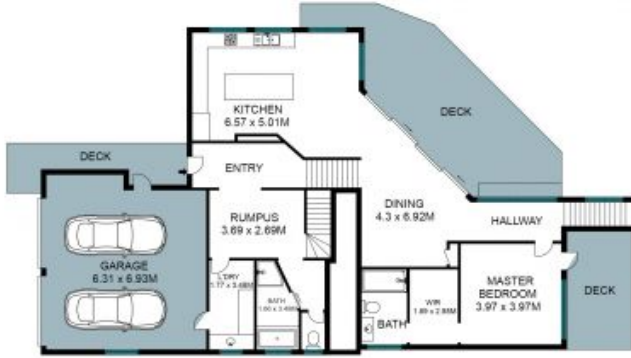
0437787221



LOWER LEVEL



UPPER LEVEL



GROUND FLOOR



SITE PLAN

The site plan and floor plan are not to scale; measurements are indicative in meters. Bushes and trees are placed for illustration purposes. Plans should not be relied on. Interested parties should make and rely on their own inquiries. All other information provided has been collected from reliable sources but cannot be guaranteed for accuracy.

40B Berne Street, Bateau Bay

