



107c/80 Waterloo Road Macquarie Park, NSW

2  1  2  1 

Stylish apartment in top location

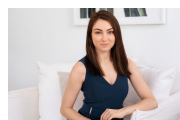
Located on level 1 this brand new apartment is situated in the heart of Macquarie Park with everything at your doorstep. Designed by the award-winning architectural studio of DKO, this 2-bedroom apartment has good space allocation and fine interior details.

Price: Deposit Taken - \$650 per week
Available Date: 28/01/2022



Eliza Zammit

02 8893 2220



Sarah Hastings

02 8893 2218



PARKONE
SYDNEY

C107 C308
C508 C608
 C1008

2 BED

Internal:	78m ²
External:	10m ²
Total:	88m ²



© 2014 P&O