



1/275 Pittwater Road Manly, NSW

2 1 1

### Spacious two bedroom apartment

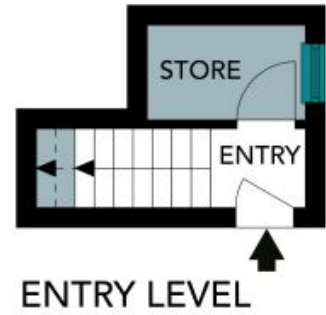
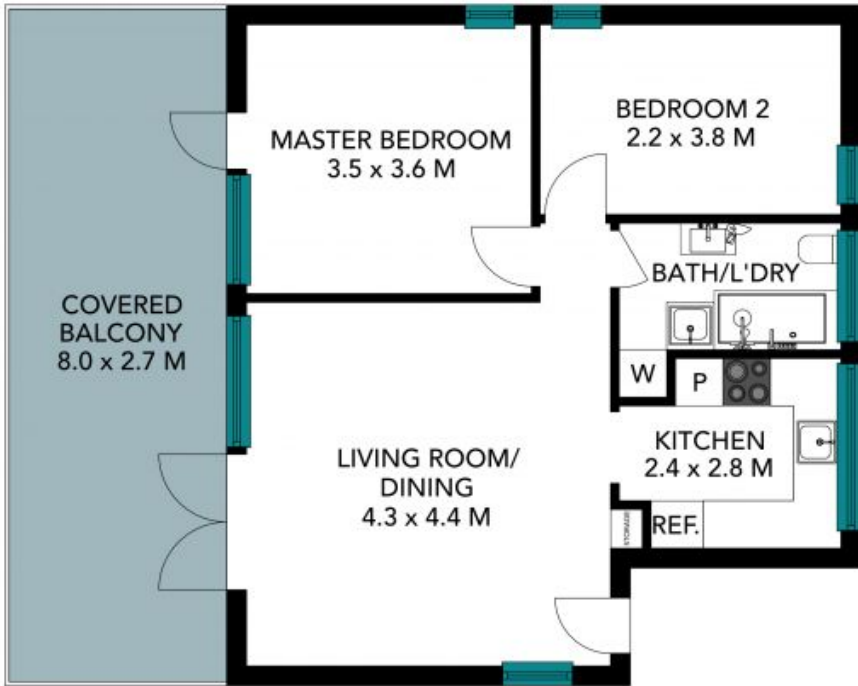
Situated above Manly's Croquet Club is this updated two bedroom apartment featuring a large entertaining balcony with views over the park.

**Price:** Holding Fee Taken  
**Bond:** \$2,800  
**Available Date:** 12/02/2022



**Laurien Bakker**

0499 172 013



**MAIN LEVEL**

The floor plan is not to scale, measurements are indicative and in metres. Colour elements are not to position. Plans should not be relied on. Interested parties should make and rely on their own enquiries. All other information provided has been collected from reliable sources but cannot be guaranteed for accuracy.

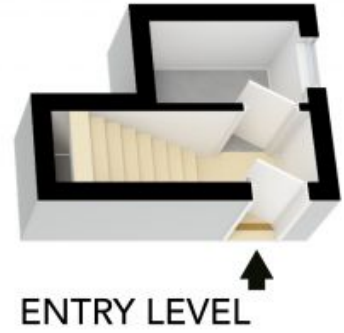


1/275 Pittwater Rd, Manly





MAIN LEVEL



ENTRY LEVEL

The floor plan is not to scale, measurements are indicative and in metres. All features included in this 3D plan are for inspiration purposes only. This is not an exact replica of the property or the position of exterior elements. Plans should not be relied on. Interested parties should make and rely on their own enquiries.



1/275 Pittwater Rd, Manly

