



13/578-584 Pacific Highway Killara, NSW      3    2    2

### Vast whisper quiet apartment, with walk to rail

Take advantage of this apartment's home-size layout, whisper quiet rear position, and walk to rail location, that pairs easy living with outstanding convenience. Upsize or downsize to suit your needs, with an incredible 192sqm on title, bolstered by full brick Mirvac quality that has stood the test of time. Stroll to rail via pretty Marion Street. Zoned for Killara High.

Price:                      Undisclosed



**Andrew Braid**  
0404 979 597



**Richard Patterson**  
0416 228 187

13/578-584 Pacific Highway  
Killara

STONE



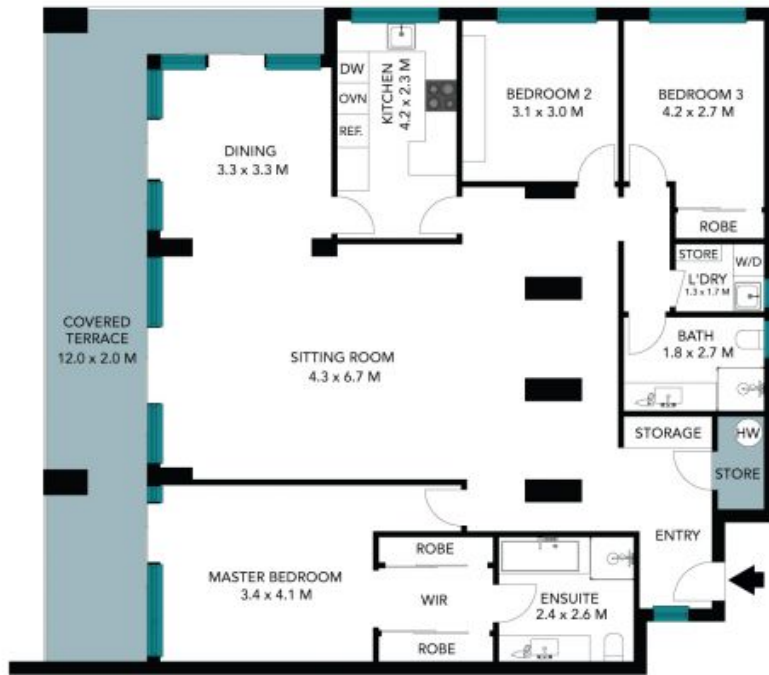
The floor plan is not to scale; measurements are indicative and in metres. All features included in this 3D plan are for inspiration purposes only. This is not an exact replica of the property or the position of exterior elements. Plans should not be relied on. Interested parties should make and rely on their own enquiries.

13/578-584 Pacific Highway  
Killara

STONE



(NOT IN POSITION)



The floor plan is not to scale, measurements are indicative and in metres. Certain elements are not in position. Plans should not be relied on. Interested parties should make and rely on their own enquiries. All other information provided has been collected from reliable sources but cannot be guaranteed for accuracy.