



4/223 Woronora Road Engadine, NSW

4 2 2

### Immaculate townhouse in family-friendly setting

Take a moment to unwind and enjoy this spacious light filled haven, peacefully tucked away on the edge of Heathcote National Park. Perfect for families, first homebuyers and investors alike, it's contemporary living made easy, close to all amenities. Footsteps from a choice of local schools and a short walk from Engadine's colourful shopping village, you'll love calling this place "home".

**Price:** \$1,151,000  
**Council Rates:** \$353.00 p/q  
**Water Rates:** \$282.00 p/q  
**Strata Rates:** \$926.00 p/q



**Rhys Christofa**

0415 684 877

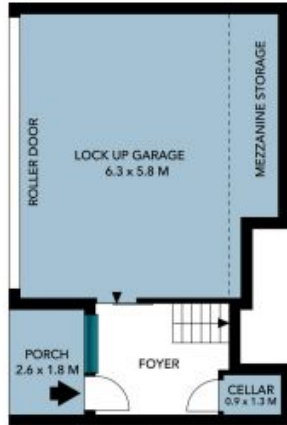


**Ezra Malolo**

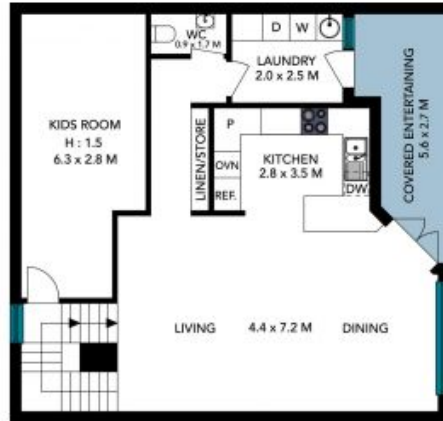
0401 490 024



Site Plan



Lower Ground Floor



Upper Ground Floor



1st Floor



The site plan and floor plan are not to scale; measurements are indicative and in metres. Bushes and trees are placed for illustration purposes. Plans should not be relied on. Interested parties should make and rely on their own enquiries. All other information provided has been collected from reliable sources but cannot be guaranteed for accuracy.



Lower Ground Floor



Upper Ground Floor



1st Floor



The floor plan is not to scale; measurements are indicative and in metres. All features included in this 3D plan are for inspiration purposes only. This is not an exact replica of the property or the position of exterior elements. Plans should not be relied on. Interested parties should make and rely on their own enquiries.