

661 Darling Street Rozelle, NSW

ICONIC OFFERING ** Deposit Taken **

Stone Commercial are proud to Exclusively present this 19th Century Sandstone Building Famously known as (Tilly's).

Council Rates: \$0.00 p/q

Water Rates: \$0.00 p/q

Strata Rates: \$0.00 p/q



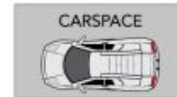
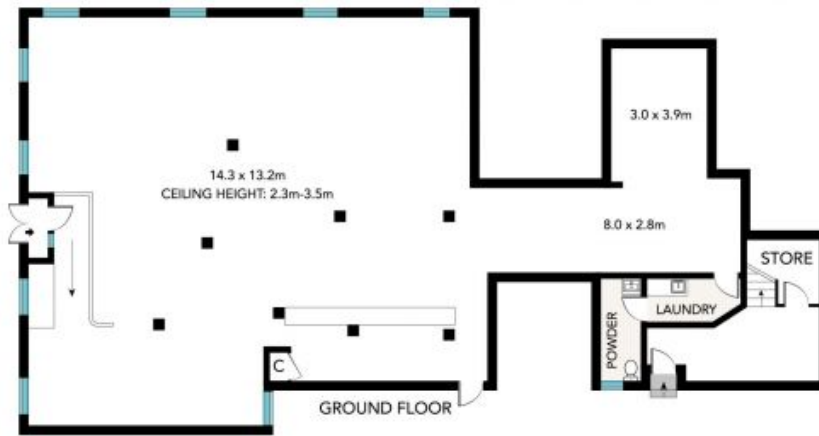
Paul Di Mauro

0431 099 976



Rick (Riccardo) Pignetti

0439 398 959



661 Darling Street, Rozelle



All information in this document has been gathered from various third party sources we believe to be reliable; however, we cannot guarantee its accuracy, and we accept no responsibility and disclaim all liability in respect to any errors, omissions, inaccuracies or misstatements in this document. Prospective purchasers are advised to carry out their own investigations and rely on their own enquiries.