



26/35 Dalley Street Queenscliff, NSW



Luxe penthouse apartment with spectacular terrace

Presented to perfection with expansive, well-appointed interiors and awash with natural light, this fabulous penthouse apartment is defined by its extravagantly vast rooftop terrace boasting breathtaking sweeping views. Crowning the acclaimed 'Sorrento' security complex, this extraordinary home promises spectacular indoor/outdoor living and a coastal lifestyle beyond compare.

Price: \$2,575,000
Council Rates: \$356.00 p/q
Water Rates: \$151.00 p/q
Strata Rates: \$1,346.00 p/q



Chris Elliott

0410 416 066



Aimee Atkins

0402 843 730

26/35 Dalley Street
Queenscliff

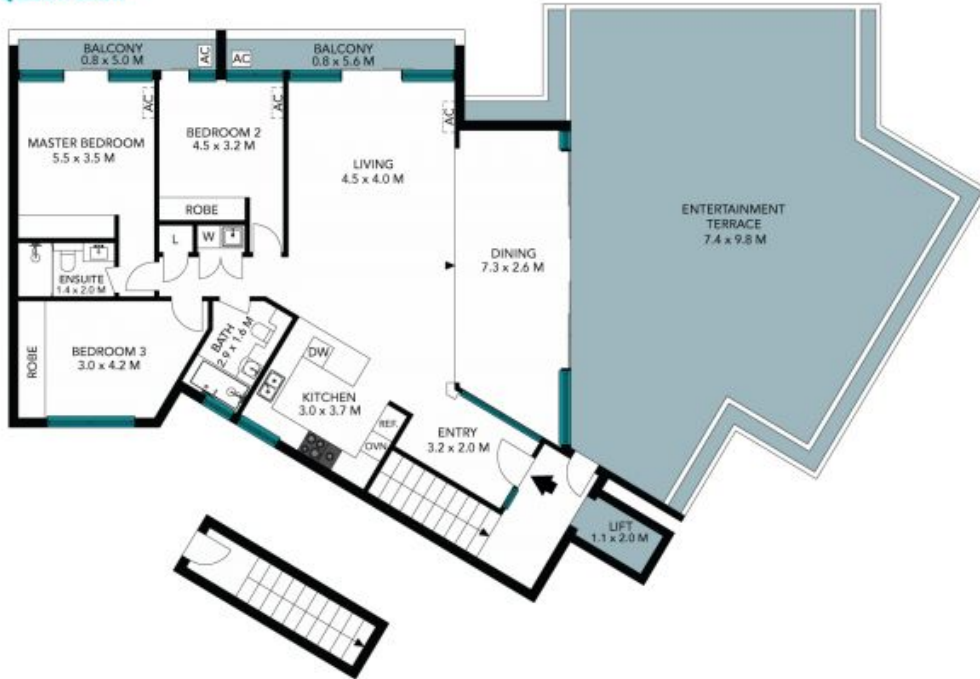


Internal Living: 147 sqm
External Living: 100 sqm
Total Living Area: 247 sqm



The floor plan is not to scale; measurements are indicative and in metres. All features included in this 3D plan are for inspiration purposes only. This is not an exact replica of the property or the position of exterior elements. Plans should not be relied on. Interested parties should make and rely on their own enquiries.

26/35 Dalley Street
Queenscliff



STONE



(NOT IN POSITION)



(NOT IN POSITION)

Internal Living: 147 sqm
External Living: 100 sqm
Total Living Area: 247 sqm



The floor plan is not to scale; measurements are indicative and in metres. Exterior elements are not in position. Plans should not be relied on. Interested parties should make and rely on their own enquiries. All other information provided has been collected from reliable sources but cannot be guaranteed for accuracy.