



11/2-4 Newhaven Place St Ives, NSW 2 2 1

Expansive stroll-to-everything modern apartment

This light and open northeast apartment offers spacious high-quality living with 138sqm (approx.) on title in a modern security complex. Lounge and bedrooms open to large balconies. Well-appointed gas and stone kitchen. Master bedroom with ensuite. Stroll to City express bus, Stanley Street cafes and St Ives Village shopping. Great as a first home, a downsize or a savvy investment.

Price: \$948,000



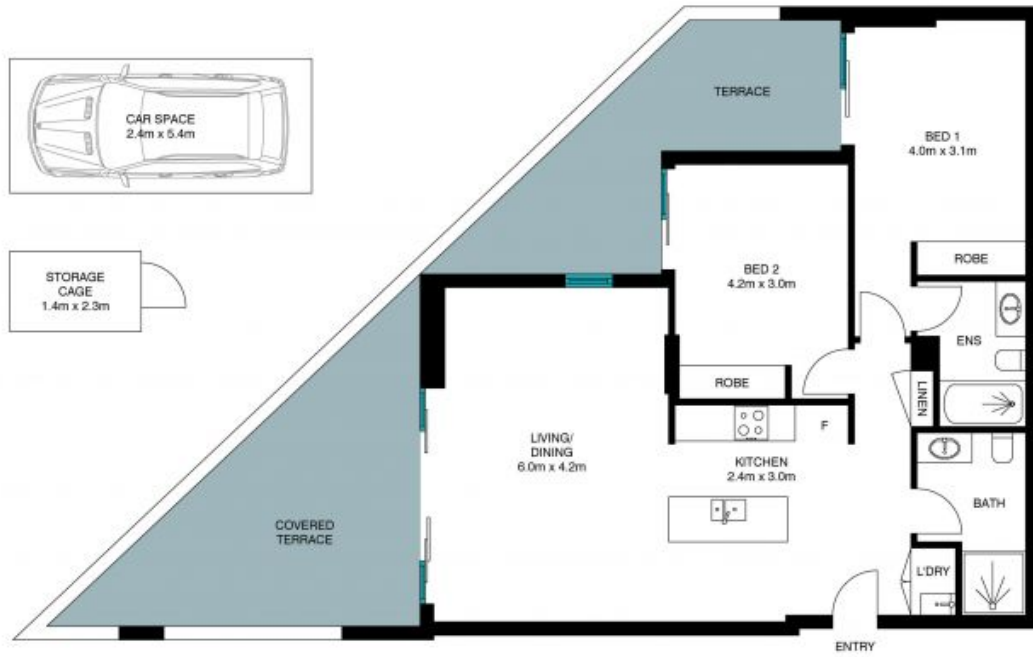
Bobby Shi

0404 823 911



Christopher Smith

0432 369 197



Total Floor Area: 122m²
 Car Space: 13m²
 Storage: 3m²
 Total Measurements: 138m²

The site plan and floor plan are not to scale; measurements are indicative and in metres. Baths and trees are placed for illustration purposes. Plans should not be relied on. Interested parties should make and rely on their own enquiries. All other information provided has been collected from reliable sources but cannot be guaranteed for accuracy.



11/2-4 Newhaven Place, St Ives

