



607/4 Peake Avenue Rhodes, NSW

2 1 1

Waterfront haven with ultimate walk-to-everywhere 'Monaco' address

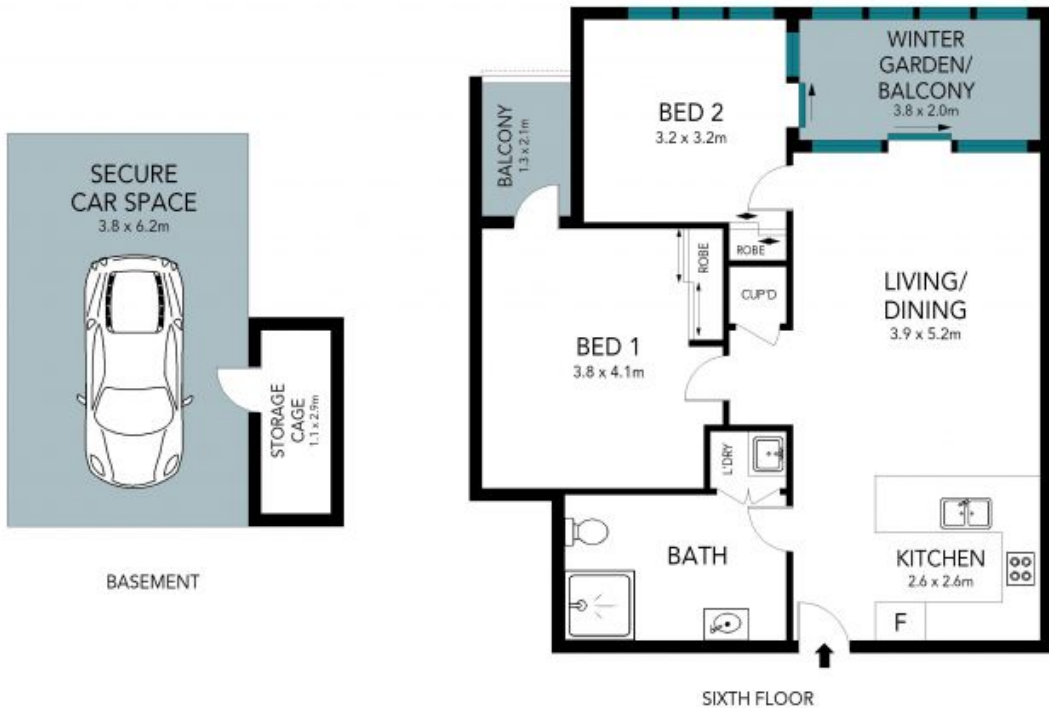
One of the area's best opportunities presents itself in this sophisticated waterfront apartment, prestigiously positioned within the 'Monaco' collection of executive suites. Soaring high above the river with scenic north facing views never-to-be-built-out, it delivers luxurious dimensions for living with a seamlessly integrated winter garden balcony. Just footsteps from river walks, cycleways, popular eateries and transport, it's an intelligent investment and memorable home at the foot of irresistible lifestyle and recreation amenities.

Price: Contact agent
Council Rates: \$295.73 p/q
Water Rates: \$151.65 p/q
Strata Rates: \$3,639.00/year (approx)



Jeff Jianfu Luo

0425 286 668



The floor plan is not to scale; measurements are indicative and in metres. Exterior elements are not in position. Plans should not be relied on. Interested parties should make and rely on their own enquiries.

607/4 Peake Avenue, Rhodes

