



706/60 Jefferson Lane Palm Beach, QLD



### Downsizers, Investors & Holiday Home Hunters

Welcome to The Jefferson! This is an opportunity for you to secure a beautiful, modern apartment along the prestigious Jefferson Lane in Palm Beach. Get the best of both worlds with both hinterland and ocean views.

- Hardwood engineered flooring throughout
- Ducted air conditioning for the Summer days
- Positioned on the Penthouse Level 7 with hinterland + ocean views
- Extra large carspace
- Extra large exclusive storage cage
- Communal lockable storage for recreational equipment
- Residents only area includes spa, BBQ and lounge space
- Pets allowed, upon body corporate approval

Price:

Expressions Of Interest



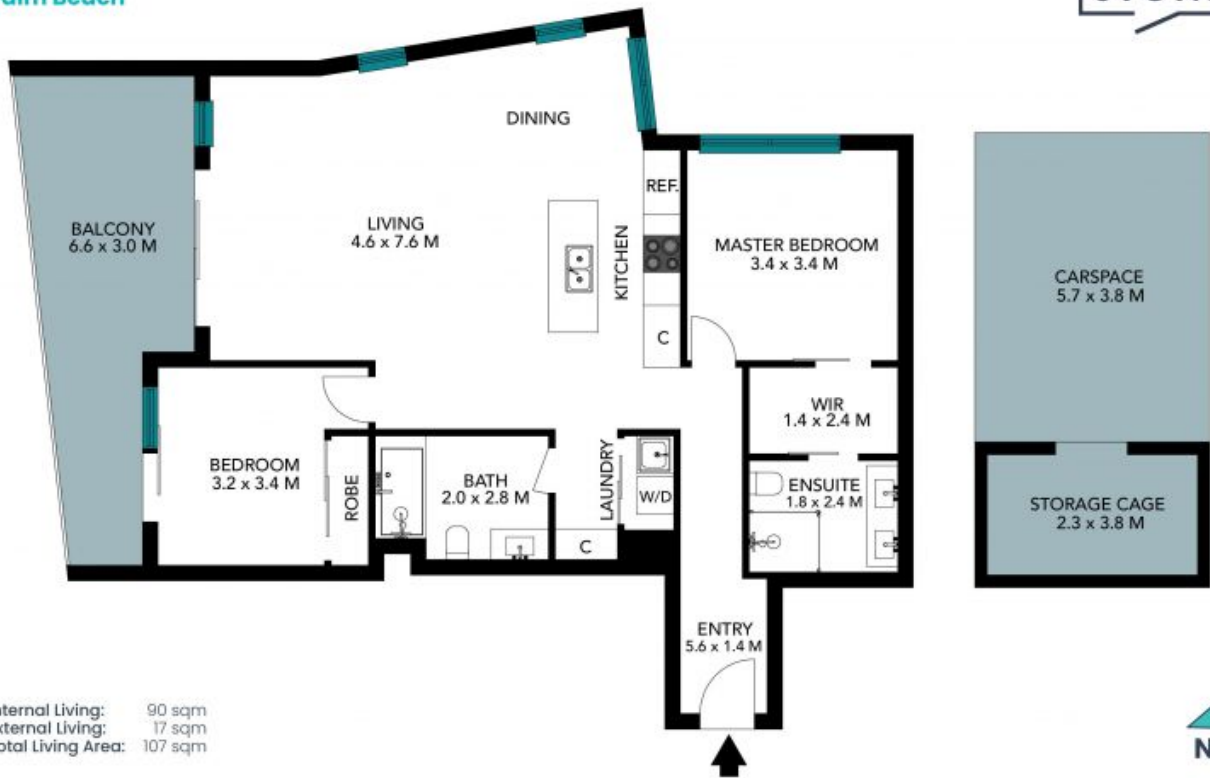
**Rebecca Leo**

0419 880 822

Disclaimer: All information (including but not limited to the property area, floor size, price, address and general property description) is provided as a convenience to you, and has been provided to Stone by third parties. Stone and Stone's partners have no belief one way or the other as to whether the information contained within is correct, neither Stone nor its partners, licensors or suppliers (nor their respective directors, affiliates or em...

706/60 Jefferson Lane  
Palm Beach

STONE



The floor plan is not to scale, measurements are indicative and in metres. Exterior elements are not in position. Plans should not be relied on. Interested parties should make and rely on their own enquiries. All other information provided has been collected from reliable sources but cannot be guaranteed for accuracy.

706/60 Jefferson Lane  
Palm Beach

STONE



Internal Living: 90 sqm  
External Living: 17 sqm  
Total Living Area: 107 sqm

The floor plan is not to scale; measurements are indicative and in metres. All features included in this 3D plan are for inspiration purposes only. This is not an exact replica of the property or the position of exterior elements. Plans should not be relied on. Interested parties should make and rely on their own enquiries.