

56 Kerry Crescent Berkeley Vale, NSW

4 3 2

Corner block beauty!

Positioned amongst idyllic surrounds of Tuggerah Lakes this property offers an abundance of space on a level 683m2 corner block. Featuring four oversized bedrooms, three bathrooms, multiple indoor and outdoor living spaces, this home is perfect for those seeking multi-generational living options or the savvy investor looking for a solid family size home. With large double lock up garage and plenty of off street parking, there is an abundance of space to explore your options and store your toys. Located within 150m walk of the Tuggerah Lakes walking track and only a 5.5km drive to the Tuggerah M1 onramp and popular Westfield shopping centre makes this a must inspect today!

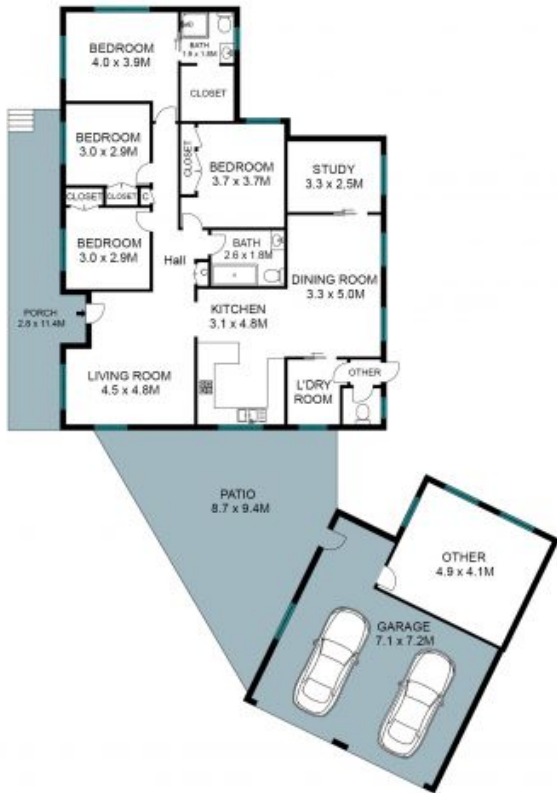
Price: \$840,000



Volkan Akintetik
0499 830 247



Reece Caira
0431 013 342



The site plan and floor plan are not to scale, measurements are indicative in meters. Bushes and trees are placed for illustration purposes. Plans should not be relied on. Interested parties should make and rely on their own inquiries. All other information provided has been collected from reliable sources but cannot be guaranteed for accuracy.

56 Kerry Crescent, Berkeley Vale

