



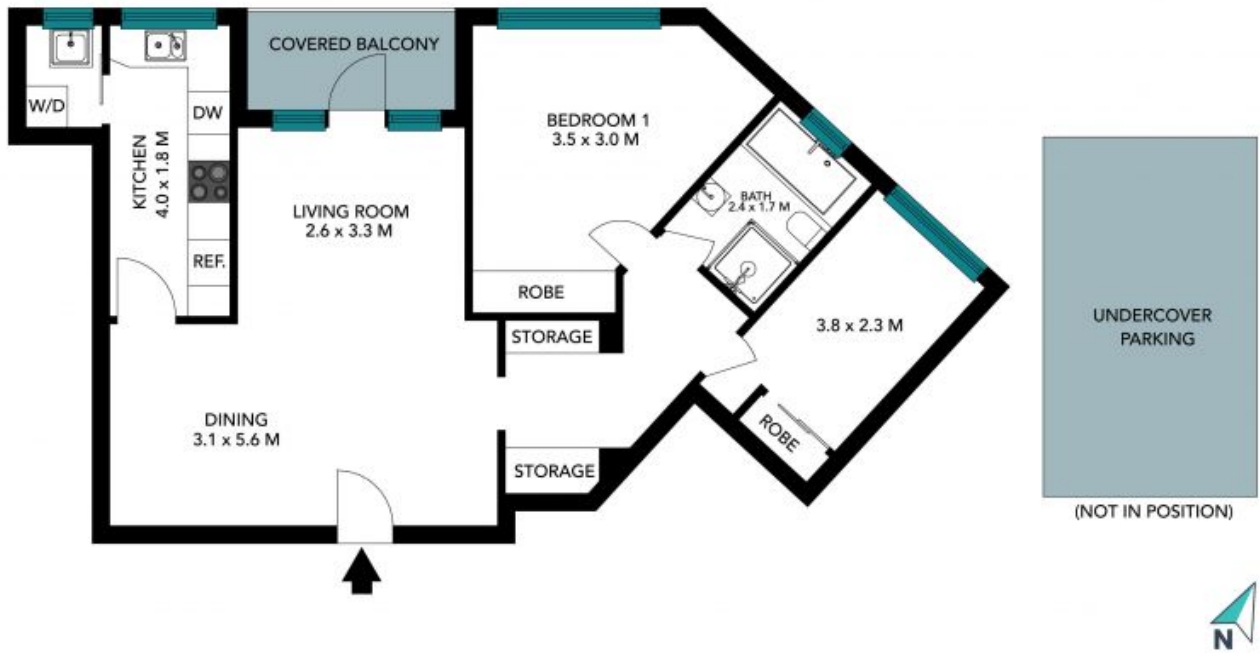
6/6 Avenue Road Mosman, NSW 2  1  1 

**Leafy Oasis**  
(Corner Millett Road and Avenue Road)

- Idyllic setting surrounded by the rainforest-like greenery of Reid Park
- Good natural light, double brick, chic contemporary flooring throughout
- Expansive living and dining rooms, the balcony overlooks the canopy
- High ceilings, quality stone kitchen with dishwasher, internal laundry
- Two bright and spacious bedrooms with stunning vistas and built-in robes
- Centrally positioned updated bathroom, single covered car space on title
- Ample storage throughout the apartment plus shared common area storage

**Price:** \$1,200,000

**Stone Real Estate -**  
**Head Office**



The floor plan is not to scale, measurements are indicative and in metres, exterior elements are not in position. Plans should not be relied on, interested parties should make and rely on their own enquiries. All other information provided has been collected from reliable sources but cannot be guaranteed for accuracy.

6/6 Avenue Road  
Mosman

STONE



The floor plan is not to scale; measurements are indicative and in metres. All features included in this 3D plan are for inspiration purposes only. This is not an exact replica of the property or the position of exterior elements. Plans should not be relied on. Interested parties should make and rely on their own enquiries.