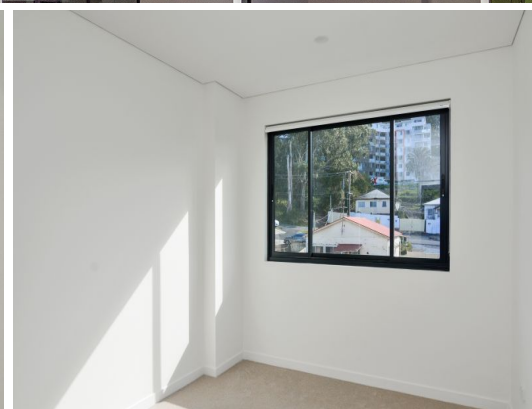


STONE



604/36 Showground Road Gosford, NSW

2  2  2 

## CONVENIENT LOCATION

This sensational two bedroom apartment is ideally located directly opposite the Gosford Railway Station and offers an easy 100 metre stroll into Gosford CBD.

Its features include:

- Open plan living and dining area with tiles for low maintenance
- Modern kitchen with stainless steel appliances, gas cooking and dishwasher
- Master bedroom complete with ensuite and walk in robe
- Air conditioning
- Private Balcony
- Internal Laundry
- Double secure car spaces
- Lift access

**Price:** \$550.00 per week

**Bond:** \$2,200

**Available Date:** 07/04/2022



**Ethan Medina**

0402 540 706



**Ethan Medina**

0402 540 706