



4 Betula Place Loftus, NSW

3

2

1

Dual living

Situated in a fabulous cul-de-sac in the tightly held suburb of Loftus, this much-loved family 3/4 bedroom home has a multitude of living options. Featuring a self-contained in-law accommodation downstairs and three-bedroom home upstairs, this is the perfect opportunity for the growing family.

Price: Contact agent

Council Rates: \$468.00 p/q

Water Rates: \$248.00 p/q



Gerard Foote

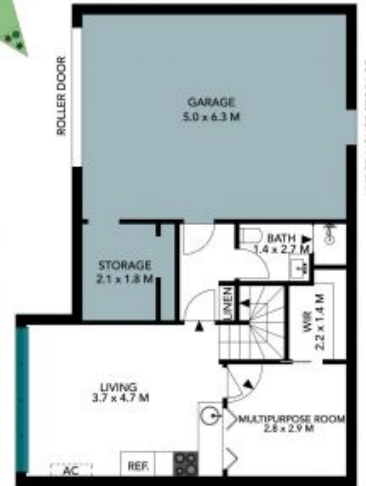
0433 421 333



Liam Pesa

0423 601 244

4 Betula Place
Loftus



The site plan and floor plan are not to scale; measurements are indicative and in metres. Bushes and trees are placed for illustration purposes. Plans should not be relied on. Interested parties should make and rely on their own enquiries. All other information provided has been collected from reliable sources but cannot be guaranteed for accuracy.



Entry Level



Lower Level



The floor plan is not to scale; measurements are indicative and in metres. All features included in this 3D plan are for inspiration purposes only. This is not an exact replica of the property or the position of exterior elements. Plans should not be relied on. Interested parties should make and rely on their own enquiries.