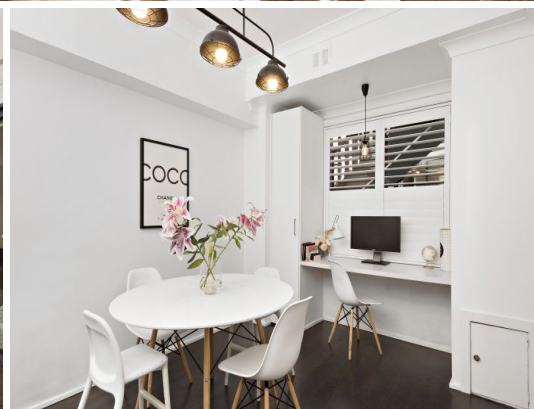
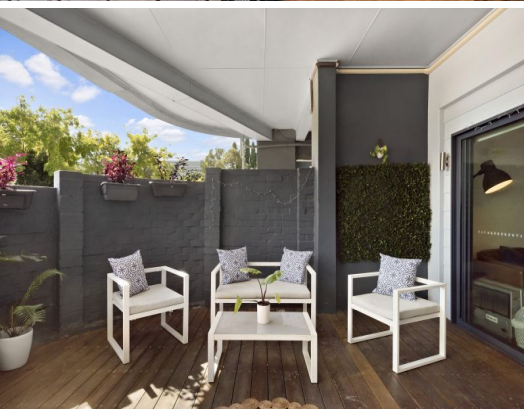


STONE



4/199 Sydney Road Fairlight, NSW



Amazing 137sqm garden apartment with the feel of a semi

This oversized gorgeous garden apartment exudes the ambience and functionality of a semi. Fusing period charm and contemporary style throughout its beautifully proportioned interiors, it opens to an extensive deck that captures northerly sunlight and district views. Its footsteps to the village and buses, and a stone's throw from Manly's hub.

Price:

Contact Agent



Eddy Piddington

0414 333 907



Michael Egan

0499 172 009



(NOT IN POSITION)



The floor plan is not to scale; measurements are indicative and in metres. Entrance elements are not in position. Plans should not be relied on. Interested parties should make and rely on their own enquiries. All other information provided has been collected from reliable sources but cannot be guaranteed for accuracy.

4/199 Sydney Road
Fairlight



The floor plan is not to scale; measurements are indicative and in metres. All features included in this 3D plan are for inspiration purposes only. This is not an exact replica of the property or the position of exterior elements. Plans should not be relied on. Interested parties should make and rely on their own enquiries.