

STONE



105/2-10 Coolgardie Street Elanora, QLD

3 

2 

2 

Sold - Record Price (Non Waterfront)

Beautifully renovated so you don't have to lift a finger, this stylish townhouse in 'Isle of Palms Resort' is a fresh, bright and breezy lifestyle retreat. The welcoming living areas are pristinely presented and flow to a private courtyard for entertaining. A stroll to The Pines Elanora and minutes from beaches, the exceptional address is ideal for those who love convenience.

- Secure gated community, home positioned at end of block, only one common wall
- Airy open plan lounge/dining room with VJ feature wall and light timber floors
- Covered entertainers' deck bathed in sunshine, yard fenced for extra privacy
- Contemporary kitchen equipped with electric appliances, sleek stone benchtops
- Spacious bedrooms, second has study nook, built-in/walk-in robes, plush carpet
- Modern bathroom offers bath tub, separate laundry, additional shower and w/c
- Air conditioning, versatile garage, shared pool, tennis court, ramp to lake
- Kayak on Currumbin Creek, near buses and Palm Beach-Currumbin State High

For more information please contact Brendan Andrews on 0417 788 882.

Price:

EOI Close Mon 28th March at 5pm



Brendan Andrews

0417 788 882



Sebastian Jacobson

0433 971 774

105/2-10 Coolgardie Street
Elanora



Ground Floor
Internal Living: 97 sqm
External Living: 31 sqm
Total Living Area: 128 sqm

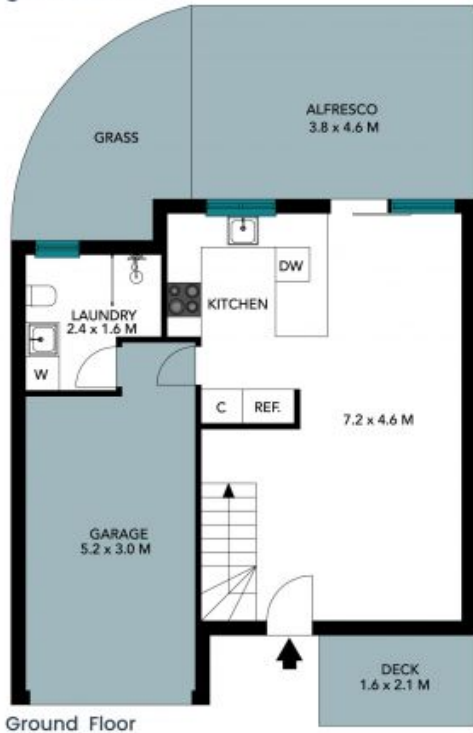


1ST FLOOR



The floor plan is not to scale; measurements are indicative and in metres. All features included in this 3D plan are for inspiration purposes only. This is not an exact replica of the property or the position of exterior elements. Plans should not be relied on. Interested parties should make and rely on their own enquiries.

105/2-10 Coolgardie Street
Elanora



Internal Living: 97 sqm
External Living: 31 sqm
Total Living Area: 128 sqm



The floor plan is not to scale, measurements are indicative and in metres. Exterior elements are not in position. Plans should not be relied on. Interested parties should make and rely on their own enquiries. All other information provided has been collected from reliable sources but cannot be guaranteed for accuracy.