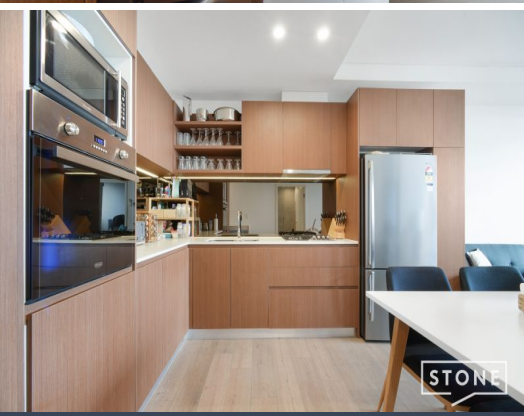


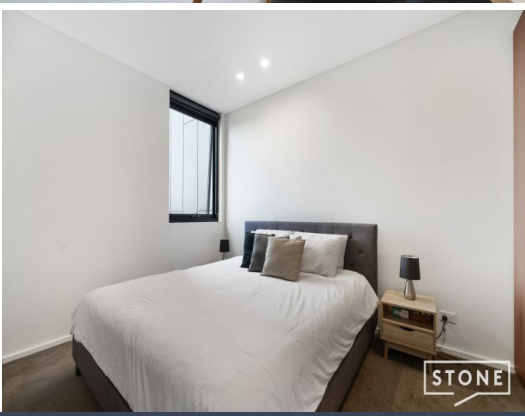
STONE



STONE



STONE



STONE



STONE

711/30 Shepherd Street Liverpool, NSW

1 1 1

### Modern Living

Superbly located, this stunning one bedroom apartment presents beautifully with modern, quality features throughout and pleasant views. Located within walking distance to schools, transport facilities, shops, parks, walking tracks, dog parks, Paper Mill bar and cafe, plus parkland along the river.

Price: \$420,000 - \$450,000



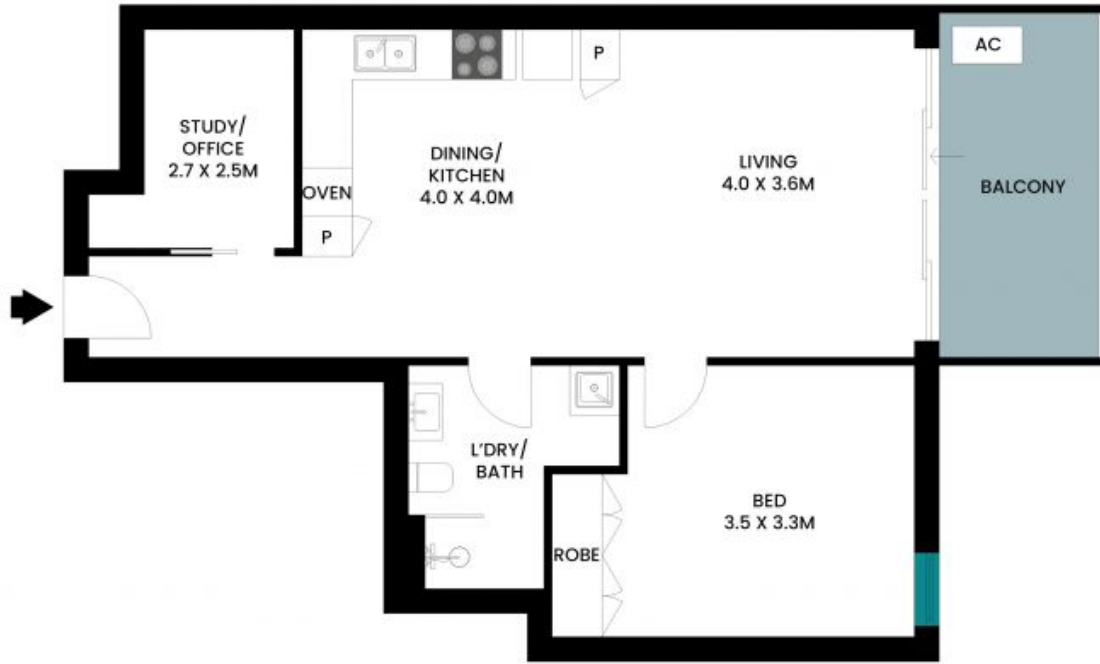
**Andrea Sant**

0404 872 125



**Adam Denina**

0413 546 713



The floor plan is not to scale, measurements are indicative and in metres. Exterior elements are not in position, plans should not be relied on. Interested parties should make and rely on their own enquiries. All other information provided has been collected from reliable sources but cannot be guaranteed for accuracy.

711/30 Shepherd Street, Liverpool

