



2/13 Gilbert Street Manly, NSW



Character apartment in lifestyle location

The ideal first home or a clever investment, this character ground floor apartment is positioned in the gorgeously-curvy Art D?co 'Moonaree' building in a quiet cul de sac in a sought-after village fringe setting. Offering near-level access from the door, freshly-painted and carpeted, and with retained original features, this charming home is just a brief walk from Manly Cove.

Price:

Contact Agent



Adam Moore

0428 319 096

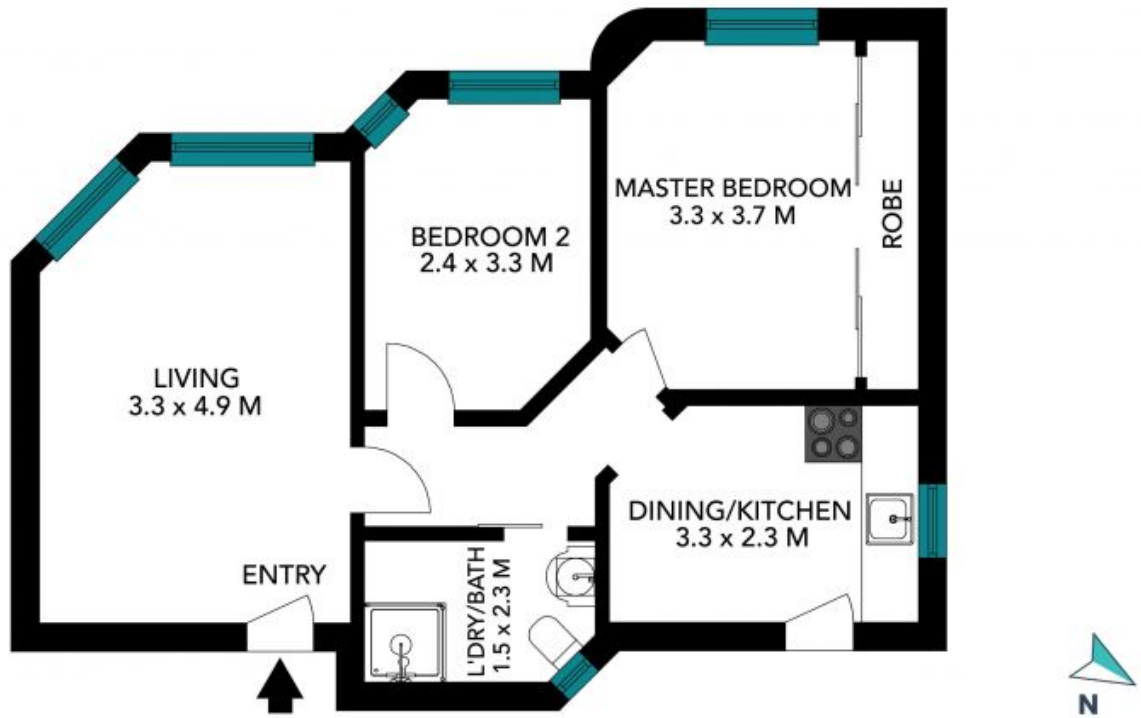


Mark Skeens

0401 241 381

2/13 Gilbert Street
Manly

STONE



The floor plan is not to scale, measurements are indicative and in metres. Detail elements are not in position. Plans should not be relied on. Interested parties should make and rely on their own enquiries. All other information provided has been collected from reliable sources but cannot be guaranteed for accuracy.

2/13 Gilbert Street
Manly

STONE



The floor plan is not to scale; measurements are indicative and in metres. All features included in this 3D plan are for inspiration purposes only. This is not an exact replica of the property or the position of exterior elements. Plans should not be relied on. Interested parties should make and rely on their own enquiries.