



47 Chapman Avenue Beecroft, NSW

3

2

3

### Art Deco splendour in blue-ribbon Beecroft

A home of distinction in Beecroft's highly sought-after heart, just footsteps from village amenities, this established 1920's residence spans a 1050sqm landscape with spellbinding early century architecture and deco-inspired design to marvel at. Its remarkable curvilinear aesthetic, embellished interiors and period dimensions translate into everyday enjoyment for today, in a unique home that proudly reflects the beauty and rare qualities of its time.

**Price:**

Sold April 2022 Contact James Ramsay 0420

**Water Rates:**

666,700 p/q



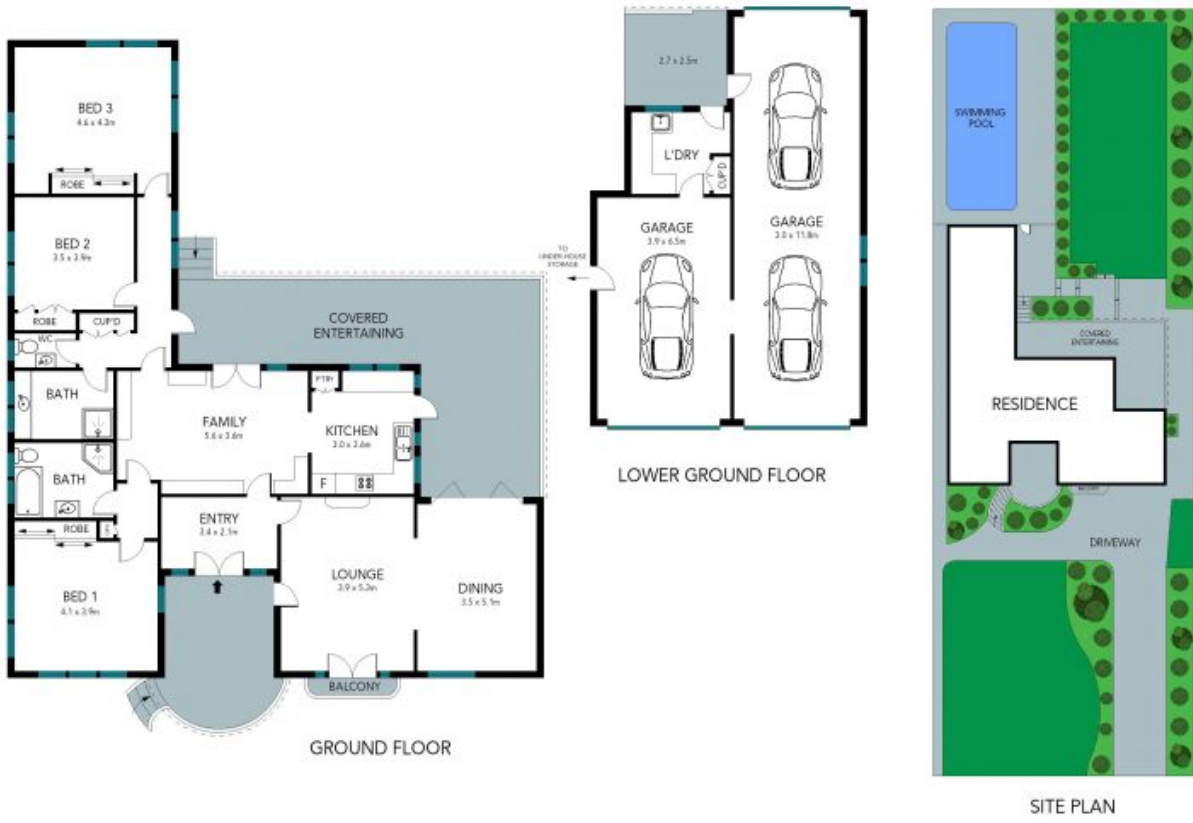
**James Ramsay**

0420 665 913



**Chloe Mawass**

0431 983 240



The floor plan is not to scale; measurements are indicative and in metres. Exterior elements are not in position. Plans should not be relied on. Interested parties should make and rely on their own enquiries.

47 Chapman Avenue, Beecroft

STONE

