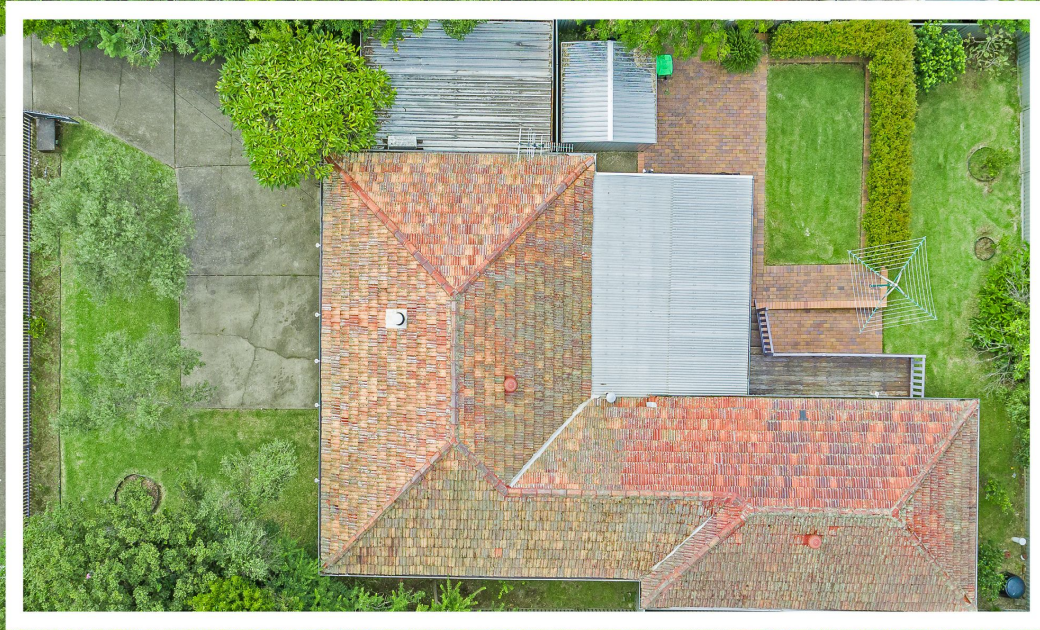


STONE



42 Marshall Road Telopea, NSW



Inspiring possibilities on R4-zoned 613.4sqm land with a self-contained studio

Pairing position and potential, this original mid-century home serves an outstanding opportunity to secure immediate liveability and exciting future rewards - with an address that's R4 zoned for duplex or high density development. Ripe for a fresh start on 613.4sqm land, with 18.288sqm gated frontage and local buses just outside the door, it's complete with a renovated kitchen, gently raised yard and guest or rental studio/teenage retreat in a brilliant location that's set to thrive.

Price: Sold May 2022 - Contact James Ramsay
Council Rates: \$400.00 p/q
Water Rates: \$147.71 p/q



James Ramsay

0420 665 913



SITE PLAN

The floor plan is not to scale; measurements are indicative and in metres. Exterior elements are not in position. Plans should not be relied on. Interested parties should make and rely on their own enquiries.

42 Marshall Road, Telopea

STONE