



64/1481 Camden Valley Way Leppington, NSW

2

1

1

Make the move to over 50's living

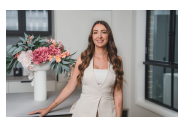
This ideal 2 bedroom home is positioned in the beautiful tree lined streets of the Four Lanterns Estate. The perfect downsizing opportunity for someone looking for an affordable living option.

Price: \$190,000 - \$200,000



Anthony Grima

0421 228 414



Rebecca Philp

0403 613 271

64/1481 Camden Valley Way
Leppington

STONE



The floor plan is not to scale, measurements are indicative and in metres. Exterior elements are not in position. Plans should not be relied on, interested parties should make and rely on their own enquiries. All other information provided has been collected from reliable sources but cannot be guaranteed for accuracy.

64/1481 Camden Valley Way
Leppington



The floor plan is not to scale, measurements are indicative and in metres. All features included in this 3D plan are for inspiration purposes only. This is not an exact replica of the property or the position of exterior elements. Plans should not be relied on. Interested parties should make and rely on their own enquiries.