



417A Rocky Point Road Sans Souci, NSW



Luxury family retreat offers a private resort oasis

A scenic 1,194sqm of glorious landscaped grounds provides a six-star resort lifestyle in this prestigious property. Undeniably one of Sans Souci's largest family estates, this unique home is more a way of life than simply a place to live, and has been cleverly designed to provide a luxurious retreat with substantial proportions and lush tropical surrounds. Here you can relax in blissful privacy yet be within walking distance to the water's edge, Sans Souci Public School and all amenities along Rocky Point Road.

Price: SOLD \$2,400,000 | Ray Fadel

Council Rates: \$478.00 p/q

Water Rates: \$191.00 p/q



Ray Fadel

0413 177 739

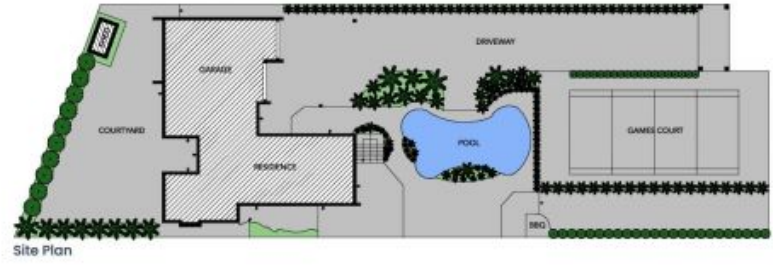
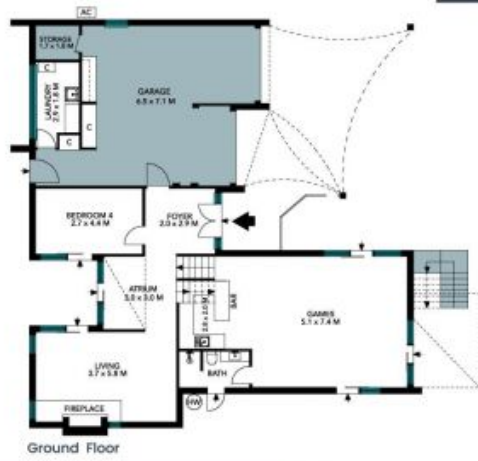


Shaun Ramani

0417 444 919

417A Rocky Point Road
 Sans Souci

STONE



The site plan and floor plan are not to scale; measurements are indicative and in metres. Bushes and trees are placed for illustration purposes. Plans should not be relied on. Interested parties should make and rely on their own enquiries. All other information provided has been collected from reliable sources but cannot be guaranteed for accuracy.

417A Rocky Point Road
Sans Souci



First Floor



Ground Floor



The floor plan is not to scale; measurements are indicative and in metres. All features included in this 3D plan are for inspiration purposes only. This is not an exact replica of the property or the position of exterior elements. Plans should not be relied on. Interested parties should make and rely on their own enquiries.