



508A/40-50 Arncliffe Street Wolli Creek, NSW



Contemporary and Convenient lifestyle

Centrally positioned in Wolli Creek, this bright and modern residence offers the ultimate convenient living. Situated in a security block with bright aspect to the living area and bedrooms. This one bedroom apartment offers an open plan living, contemporary finishes, and with a sizable balcony for guest entertainment.

It promotes easy-care convenient living, set within metres of local shops and transport. This apartment is only minutes' walk to the nearby Wolli Creek Village, Woolworths, Medical centre and many more specialty shops.

Council Rates: \$353.00 p/q

Water Rates: \$203.00 p/q

Strata Rates: \$471.00 p/q

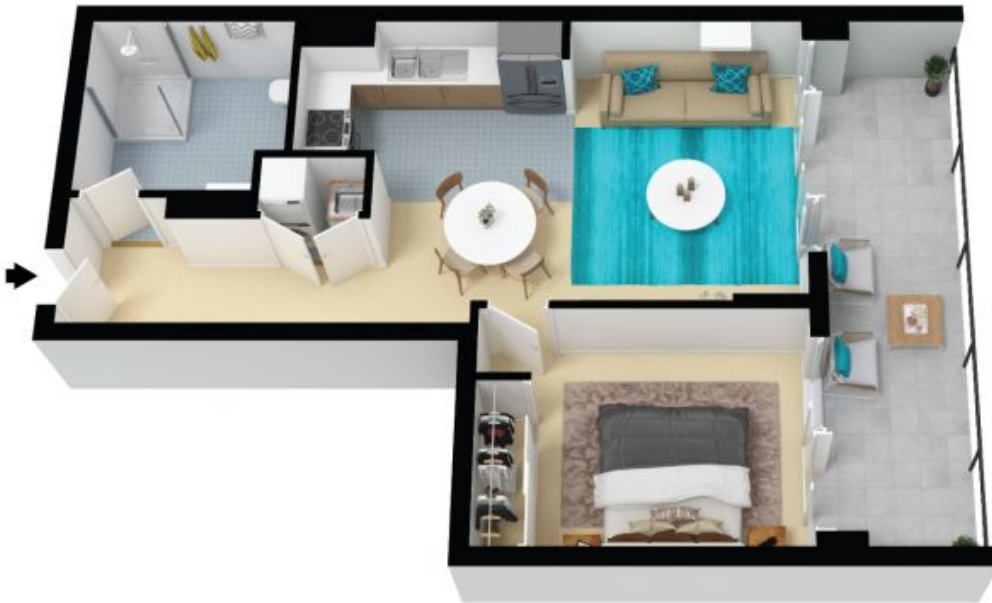


Alvin Ngiam

0466 090 928

508A/40-50 Arncliffe Street
Wolli Creek

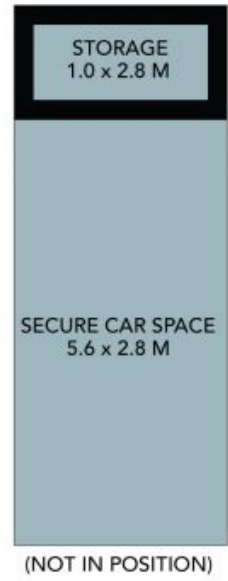
STONE



The floor plan is not to scale; measurements are indicative and in metres. All features included in this 3D plan are for inspiration purposes only. This is not an exact replica of the property or the position of exterior elements. Plans should not be relied on. Interested parties should make and rely on their own enquiries.

508A/40-50 Arncliffe Street
Wolli Creek

STONE



The floor plan is not to scale, measurements are indicative and in metres. Certain elements are not in position. Plans should not be relied on. Interested parties should make and rely on their own enquiries. All other information provided has been collected from reliable sources but cannot be guaranteed for accuracy.