



21/228 Condamine Street Manly Vale, NSW 2 2 2

The ideal first home or investment

Conveniently positioned in the heart of Manly Vale, close to amenities, transport and all the lifestyle advantages of the Northern Beaches, this light and bright first floor security apartment offers spacious and comfortable interiors hand-in-hand with a sought-after opportunity to secure a foothold in an area prized for offering easy living in an ultra-central location.

Price: \$1,040,000
Council Rates: \$366.40 p/q
Water Rates: \$147.71 p/q
Strata Rates: \$893.47 p/q



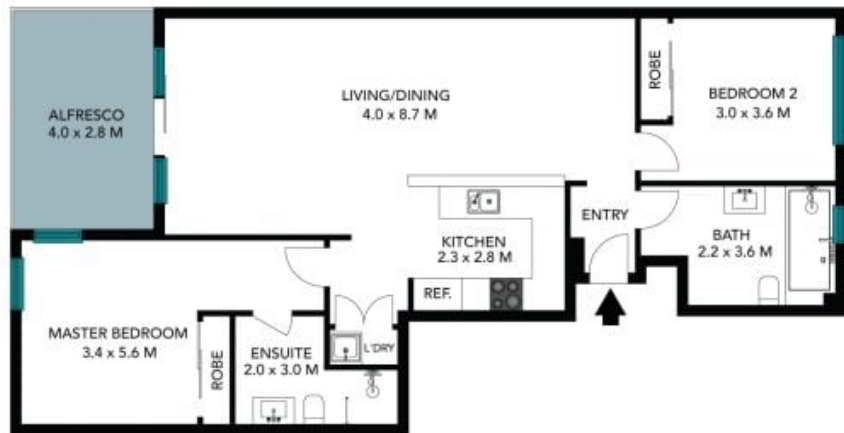
Louise Ashdown
0414 764 108



Chris Elliott
0410 416 066



(NOT IN POSITION)



Internal Living: 92 sqm
External Living: 11 sqm
Total Living Area: 103 sqm



The floor plan is not to scale, measurements are indicative and in metres. External elements are not in position. Plans should not be relied on. Interested parties should make and rely on their own enquiries. All other information provided has been collected from reliable sources but cannot be guaranteed for accuracy.

21/228 Condamine Street
Manly Vale



Internal Living: 92 sqm
External Living: 11 sqm
Total Living Area: 103 sqm



The floor plan is not to scale; measurements are indicative and in metres. All features included in this 3D plan are for inspiration purposes only. This is not an exact replica of the property or the position of exterior elements. Plans should not be relied on. Interested parties should make and rely on their own enquiries.