



11/2-6 Priddle Street Westmead, NSW

2 1 1

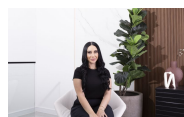
HOLDING FEE TAKEN!!! Leased for \$450 per week

Immaculate 2 bedroom apartment situated in a highly sought after pocket of Westmead, you will find yourself perfectly positioned from all that Westmead & Parramatta have to offer. Just a short stroll to convenient public transport, upcoming light rail, Westmead health precinct, the buzzing CBD, Westmead Public School, Parramatta High School and Parramatta park.

Price: \$450.00 pw
Available Date: 02/05/2022



Jason Assaf
 0416 589 096



Fatme Hallak
 02 9630 8899



The floor plan is not to scale, measurements are indicative and in metres. Exterior elements are not in position. Plans should not be relied on. Interested parties should make and rely on their own enquiries. All other information provided has been collected from reliable sources but cannot be guaranteed for accuracy.



11/2-6 Priddle Street, Westmead





The floor plan is not to scale, measurements are indicative and in metres. Exterior elements are not in position. Plans should not be relied on. Interested parties should make and rely on their own enquiries. All other information provided has been collected from reliable sources but cannot be guaranteed for accuracy.

11/2-6 Priddle Street, Westmead

STONE