

603/5 Delhi Road North Ryde, NSW

1 1 1

### Open Plan One Bedroom Plus Study In Prestigious Centrale Complex

Proudly positioned in the heart of "Centrale", this one-bedroom plus study North East Facing apartment is located in what is unquestionably one of Sydney's most desirable and convenient locations. This apartment has been expertly designed with the finest of luxury appointments by developer Frasers, making it a prestigious opportunity for investors, first-time buyers or investors alike.

Along with the luxurious appointments provided within, this lifestyle supports the convenience of easy transport connectivity via the Metro-North Ryde Station right on your doorstep, plus access to an array of amenities within the new shopping precinct at Lachlan's Line.

- 1 Large Bedroom with Built-In Wardrobes and A/C
- Stylish Open Plan Architecturally Designed
- Designer Kitchen Complete with Stone Bench Tops, Custom Island & Stainless Steel Smeg Appliances Including Dishwasher
- Secure Building with Intercom Access

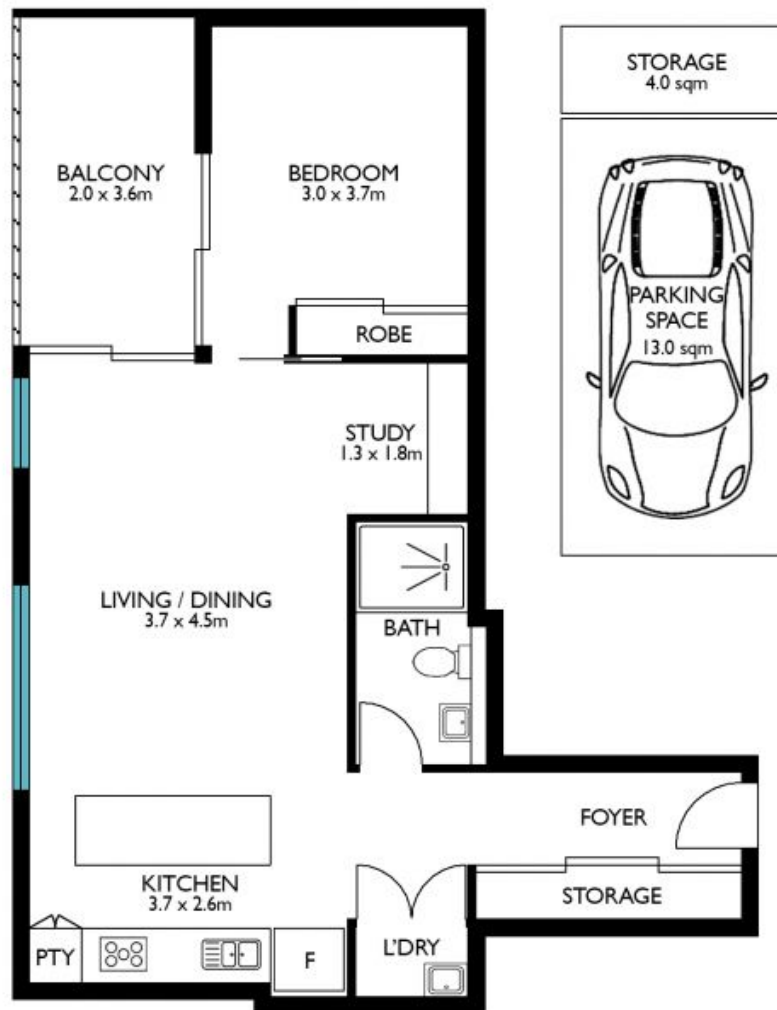
**Price:** Sold \$640,000  
**Council Rates:** \$318.00 p/q  
**Water Rates:** \$147.71 p/q  
**Strata Rates:** \$815.01 p/q



**James Sarzano**  
0410 155 496



**Emma Challen**  
0402 955 437



The floor plan is not to scale, measurements are indicative and in meters. Exterior elements are not in position. Plans should not be relied on. Interested parties should make and rely on their own enquiries.

**603/5 Delhi Road North Ryde NSW 2113**

