



14 Kulli Place Engadine, NSW



## Peaceful family oasis in sought-after location

Tightly-held for 47 years, this beautifully presented residence combines tranquil bush views with spacious living zones flooded with natural light. Along with its whisper quiet setting in a family-friendly cul-de-sac, it boasts a generous level grassed yard and provides a fantastic lifestyle opportunity with easy access to parks, village shops, Marton Public School and buses to Engadine Station.

**Price:** Contact agent

**Council Rates:** \$335.61 p/q

**Water Rates:** \$260.56 p/q



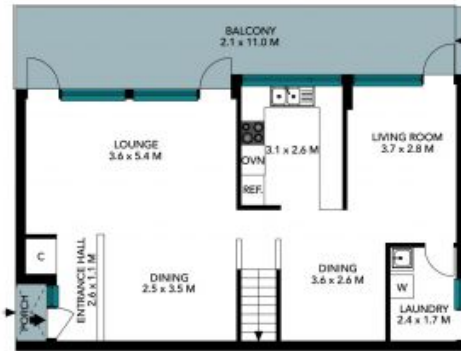
**Rhys Christofa**

0415 684 877

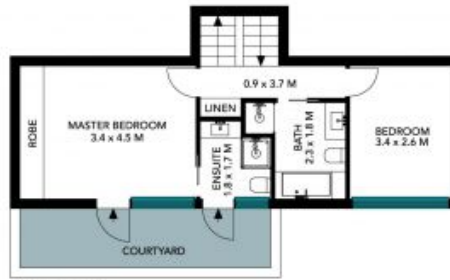


**Ezra Malolo**

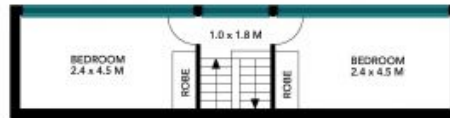
0401 490 024



Ground Level



Mid Level



Upper Level



Site Plan



The site plan and floor plan are not to scale; measurements are indicative and in metres. Bushes and trees are placed for illustration purposes. Plans should not be relied on. Interested parties should make and rely on their own enquiries. All other information provided has been collected from reliable sources but cannot be guaranteed for accuracy.



Ground Level



Mid Level



Upper Level



The floor plan is not to scale; measurements are indicative and in metres. All features included in this 3D plan are for inspiration purposes only. This is not an exact replica of the property or the position of exterior elements. Plans should not be relied on. Interested parties should make and rely on their own enquiries.