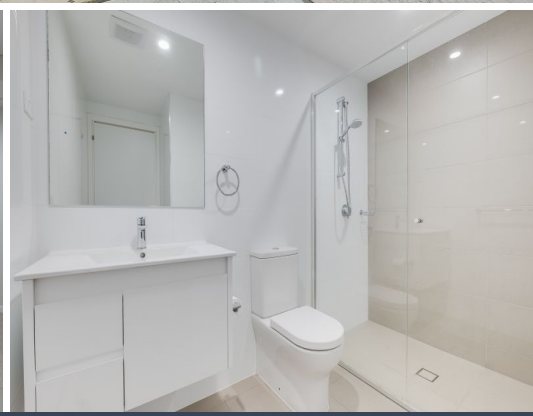




Gardenia
LANE COVE
62-70 Gordon Crescent



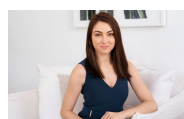
14/62 Gordon Crescent Lane Cove North, NSW 1 1 1

Modern apartment nestled within private locale

This apartment in the ultra-contemporary 'Gardenia' fuses sophisticated urban design, premium finishes and versatile open plan layout complete with large courtyard. Minutes walk from local village shops and Mowbray Road buses to the city and Chatswood, the apartment is surrounded by acres of urban parkland.

Price: Deposit Taken!

Available Date: 23/04/2022



Sarah Hastings

02 8893 2218