

SYDNEY CBD

WOOLWORTHS METRO

7 ELEVEN

LIVERPOOL RD / HUME HWY

STONE
COMMERCIAL



3/6 Braidwood Street Strathfield South, NSW

Industrial Investment Opportunity with Development Upside.

- * Total Site Area - 906 sqm
- * Annual Net Income - \$181,200 per annum + GST

Stone Commercial, are thrilled to bring to market for Sale via Auction 3/6 Braidwood Street, Strathfield South.

Price: Sold - Contract Agent
 Council Rates: \$0.00 p/q
 Water Rates: \$0.00 p/q
 Strata Rates: \$0.00 p/q

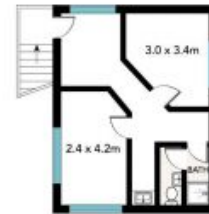
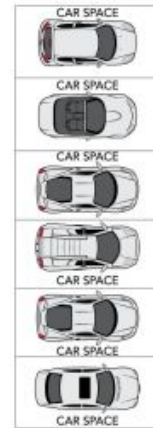
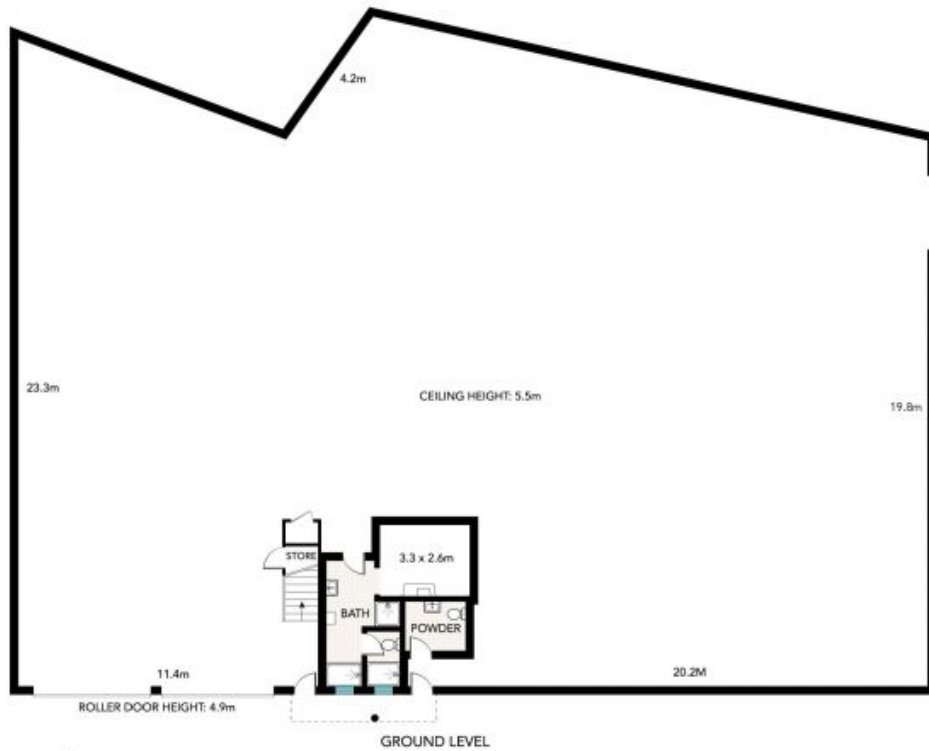


Paul Di Mauro

0431 099 976

Joseph Tropiano

0401 002 211



STONE
COMMERCIAL



3/6 Braidwood Street, Strathfield South

INT FIRST LEVEL: 36 m²
INT GROUND LEVEL: 870 m²
TOTAL: 906 m²



All information in this document has been gathered from various third party sources we believe to be reliable; however, we cannot guarantee its accuracy, and we accept no responsibility and disclaim all liability in respect to any errors, omissions, inaccuracies or misstatements in this document. Prospective purchasers are advised to carry out their own investigations and rely on their own enquiries.