



22/20-24 Preston Avenue Engadine, NSW      2      1      1

### Relaxing and spacious apartment in central location

Combining generous proportions with sunlit contemporary interiors, this top floor apartment is ideal for anyone seeking a quality low maintenance lifestyle. Set in a beautifully presented and secure complex, it's located in the heart of Engadine, within comfortable walking distance of a fantastic selection of shopping and dining options, recreation facilities and regular public transport.

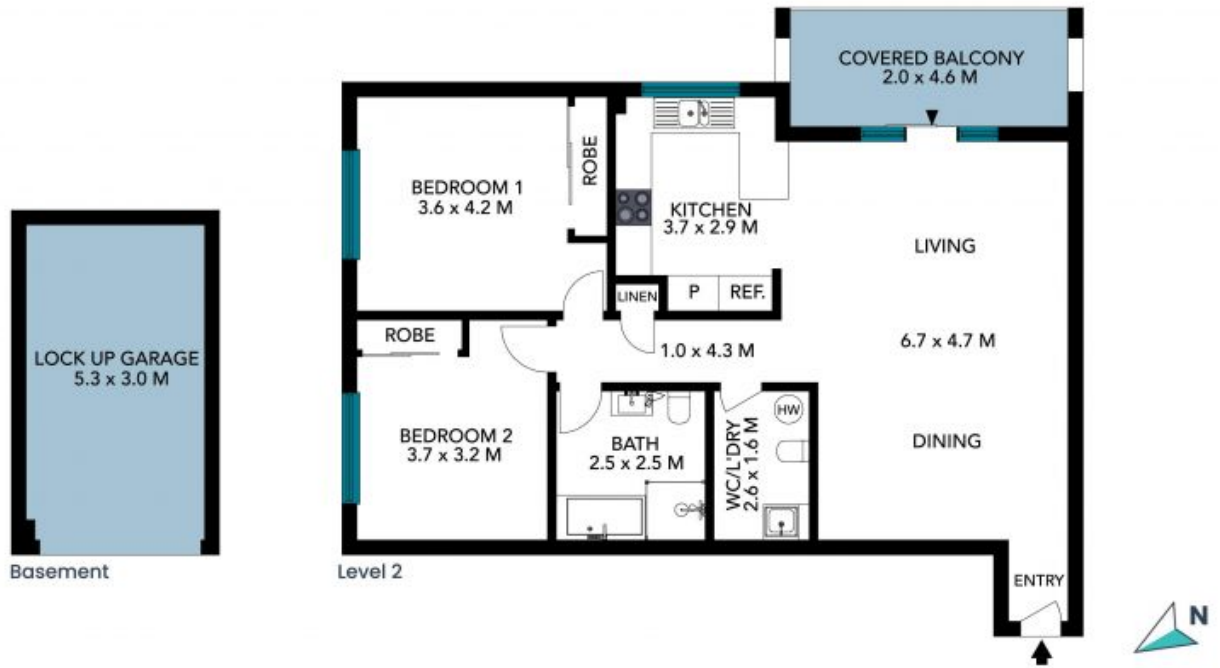
**Price:** \$645,000  
**Council Rates:** \$352.70 p/q  
**Water Rates:** \$147.71 p/q  
**Strata Rates:** \$709.22 p/q



**Rhys Christofa**  
0415 684 877



**Ezra Malolo**  
0401 490 024



The floor plan is not to scale, measurements are indicative and in metres, exterior elements are not in position. Plans should not be relied on, interested parties should make and rely on their own enquiries. All other information provided has been collected from reliable sources but cannot be guaranteed for accuracy.



The floor plan is not to scale; measurements are indicative and in metres. All features included in this 3D plan are for inspiration purposes only. This is not an exact replica of the property or the position of exterior elements. Plans should not be relied on. Interested parties should make and rely on their own enquiries.