

28/447-451 Pacific Highway Asquith, NSW

2 2 1

Sold by Steve Noakes & Geraldine Wang 0431 620 422

Sold by Steve Noakes & Geraldine Wang 0431 620 422

Perfectly located towards the rear of "Asquith Gardens" is this recently updated two bedroom contemporary apartment. Featuring a light filled combined spacious living and dining area with dark oak floorboards throughout. Modern kitchen with stainless steel appliances including dishwasher and an abundance of storage.

Price: Sold by Steve Noakes & Geraldine Wang
Council Rates: \$312.15 p/q
Water Rates: \$149.94 p/q
Strata Rates: \$1,254.00 p/q



Steve Noakes

0431 620 422



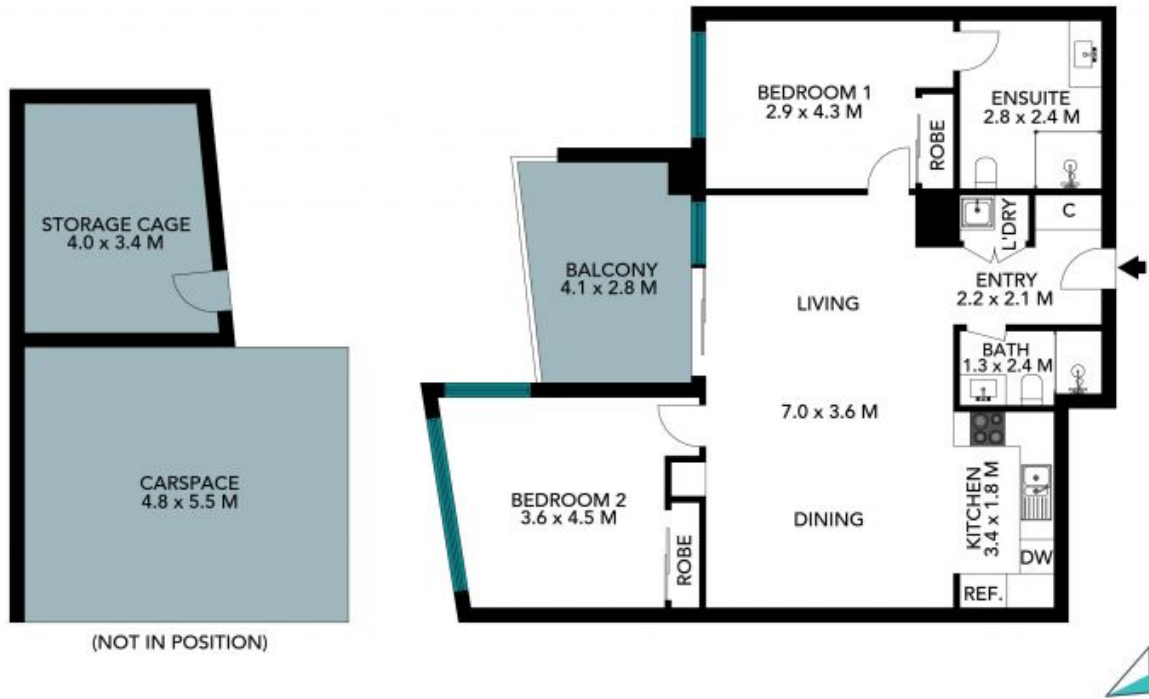
Adam Noakes

0450 753 268

28/447-451 Pacific Highway
Asquith



The floor plan is not to scale; measurements are indicative and in metres. All features included in this 3D plan are for inspiration purposes only. This is not an exact replica of the property or the position of exterior elements. Plans should not be relied on. Interested parties should make and rely on their own enquiries.



The floor plan is not to scale, measurements are indicative and in metres. Detail elements are not in position. Plans should not be relied on. Interested parties should make and rely on their own enquiries. All other information provided has been collected from reliable sources but cannot be guaranteed for accuracy.