



42/14 Lomandra Terrace Hamlyn Terrace, NSW 3  2  1 

**Townhouse with great size courtyard -Private Inspections Welcome**

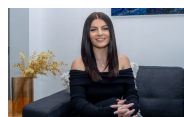
This full brick three-bedroom two storey townhouse offers spacious living and comfort. Great size living area and separate dining, with a good size low maintenance courtyard with a private lush leafy outlook. Other features include, air conditioning, generous size kitchen, storage space, internal laundry, and a single lock up garage. This home is situated in a lovely quiet residential Estate, with visitor parking. Easy access to local shops, schools, public transport, and hospitals.

**Price:** \$695,000  
**Council Rates:** \$617.76/year (approx)  
**Water Rates:** \$1,085.00/year (approx)  
**Strata Rates:** \$493.45 p/q



**Tracy Gavan**

0403 041 139



**Brodie Gavan**

0481 333 544



Ground Floor



1st Floor



The floor plan is not to scale, measurements are indicative and in metres. Colour elements are not in position. Plans should not be relied on. Interested parties should make and rely on their own enquiries. All other information provided has been collected from reliable sources but cannot be guaranteed for accuracy.

42/14 Lomandra Terrace  
Hamlyn Terrace



Ground Floor

1st Floor



The floor plan is not to scale; measurements are indicative and in metres. All features included in this 3D plan are for inspiration purposes only. This is not an exact replica of the property or the position of exterior elements. Plans should not be relied on. Interested parties should make and rely on their own enquiries.