



GRACE



27/14 Good Street Westmead, NSW

2 2 1

Brand new, third-floor apartment

Beautifully positioned on Parramatta's CBD fringe, Stone is proud to present this brand new two-bedroom dwelling, situated in the 'Grace' complex. This exquisitely designed apartment has a unique layout that delivers on premium quality, space and comfort. Located in the Westmead Public School catchment, just a stone's throw to Parramatta's entertainment quarter, Westfield Shoppingtown, Parramatta & Westmead train stations, T-way bus services, future light rail and one of the largest health, education and medical precincts in Australia.

- Contemporary kitchen offering stainless steel Fisher & Paykel appliances, porcelain marble splash back and quality stone bench tops
- Two spacious bedrooms with built-in wardrobes & en-suite to master
- Plush cut twist pile carpet & timber look ceramic tile throughout
- Stylish bathrooms with matte black taps, free standing bath and ceramic tiles
- Linen cupboard/storage inside apartment
- Internal laundry fitted with 4 kg clothes dryer
- Secure car space + storage cage, lift access to complex

Price: \$649,000



Simar Gill
0410 312 242



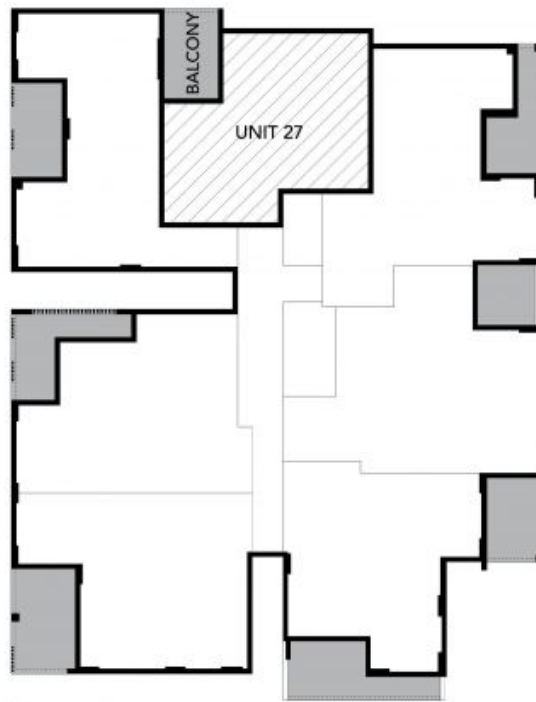
Simar Gill
0410 312 242



The floor plan is not to scale, measurements are indicative and in metres. Exterior elements are not in position. Plans should not be relied on. Interested parties should make and rely on their own enquiries. All other information provided has been collected from reliable sources but cannot be guaranteed for accuracy.

Unit 27, 14-18 Good Street, Westmead





SITE PLAN

The site plan is not to scale. Bushes and trees are placed for illustration purposes. Plans should not be relied on. Interested parties should make and rely on their own enquiries.

Unit 27, 14-18 Good Street, Westmead

